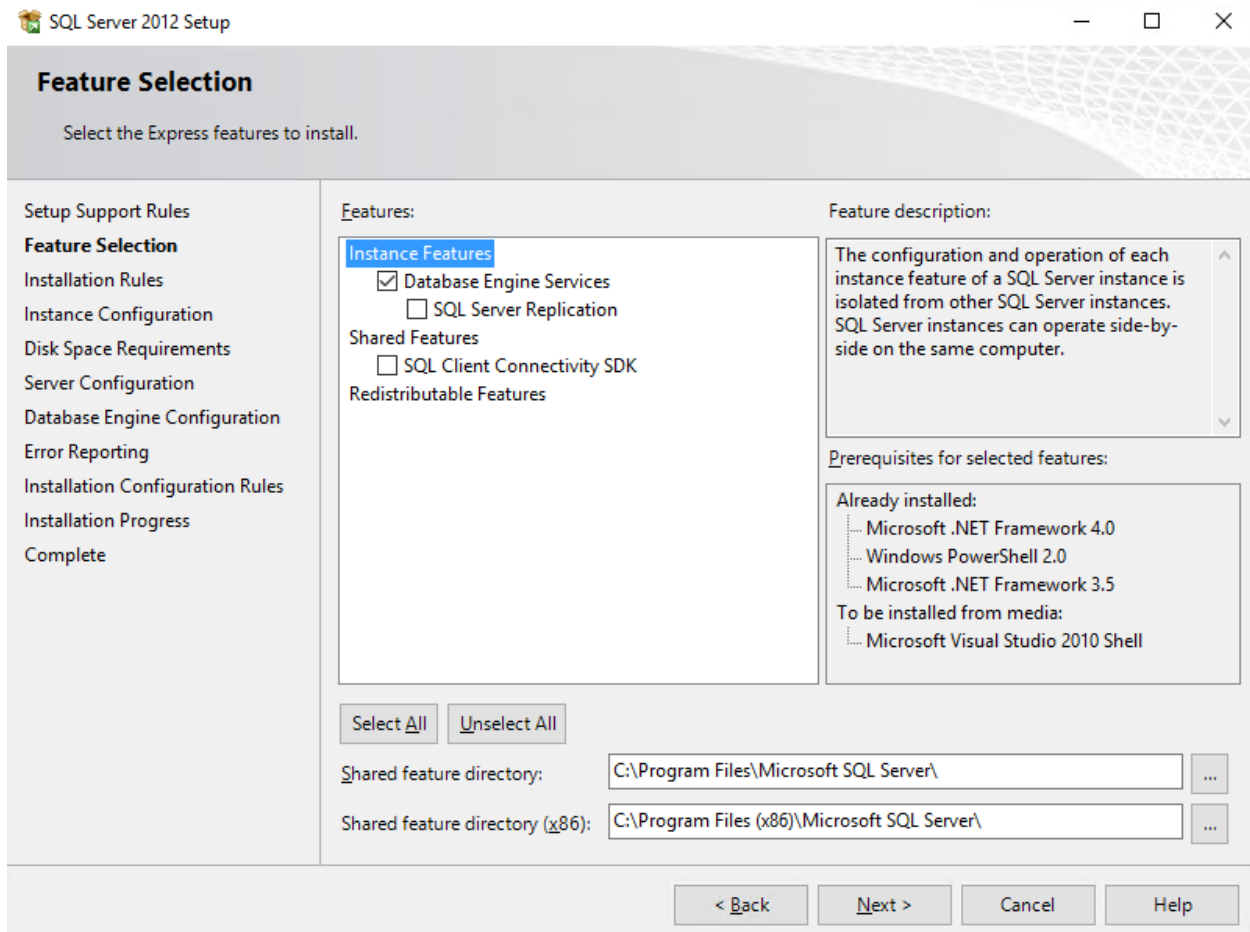


## STEP BY STEP INSTRUCTIONS ON HOW TO INSTALL AND CONFIGURE SQL EXPRESS

SELECT A NEW SQL SERVER STAND-ALONE INSTALLATION

CHOOSE THE DATABASE ENGINE SERVICES – IF YOU ARE INSTALLING WITH MANAGEMENT TOOL PLEASE SELECT MANAGEMENT TOOLS WHEN INSTALLING.





## USE THE DEFAULT INSTANCE "SQLEXPRESS"

SQL Server 2012 Setup

### Instance Configuration

Specify the name and instance ID for the instance of SQL Server. Instance ID becomes part of the installation path.

Setup Support Rules  
Feature Selection  
Installation Rules  
**Instance Configuration**  
Disk Space Requirements  
Server Configuration  
Database Engine Configuration  
Error Reporting  
Installation Configuration Rules  
Installation Progress  
Complete

Default instance  
 Named instance:

Instance ID:

Instance root directory:  ...

SQL Server directory: C:\Program Files\Microsoft SQL Server\MSSQL11.SQLEXPRESS

Installed instances:

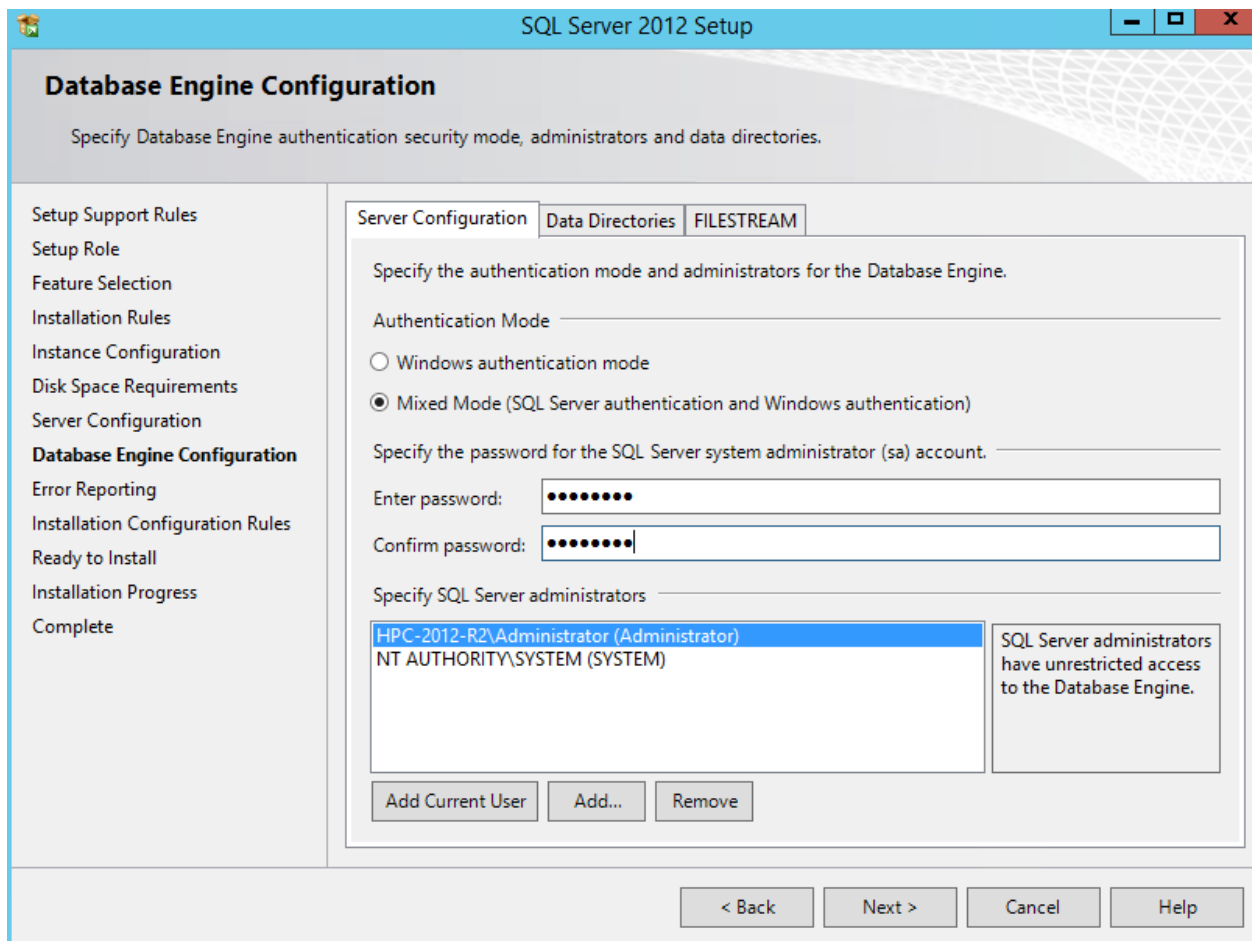
Instance Name	Instance ID	Features	Edition	Version
---------------	-------------	----------	---------	---------

< Back   Next >   Cancel   Help

SELECT MIXED MODE, ADD A PASSWORD THAT IS USED FOR THE SA ACCOUNT.

NEXT, DEFINE WHICH USERS NEED TO BE ADDED AS SQL ADMINISTRATORS.

ADD THE CURRENT USER AND A USER CALLED "SYSTEM"



The screenshot shows the 'Database Engine Configuration' window in SQL Server 2012 Setup. The window title is 'SQL Server 2012 Setup'. The main heading is 'Database Engine Configuration' with the instruction 'Specify Database Engine authentication security mode, administrators and data directories.' The left sidebar lists various setup steps, with 'Database Engine Configuration' selected. The main area has three tabs: 'Server Configuration', 'Data Directories', and 'FILESTREAM'. Under 'Server Configuration', it asks to 'Specify the authentication mode and administrators for the Database Engine.' There are two radio buttons: 'Windows authentication mode' (unselected) and 'Mixed Mode (SQL Server authentication and Windows authentication)' (selected). Below this, it asks to 'Specify the password for the SQL Server system administrator (sa) account.' There are two password fields: 'Enter password:' and 'Confirm password:', both containing masked characters. Below the password fields, it says 'Specify SQL Server administrators' and shows a list with two entries: 'HPC-2012-R2\Administrator (Administrator)' and 'NT AUTHORITY\SYSTEM (SYSTEM)'. A note on the right states 'SQL Server administrators have unrestricted access to the Database Engine.' At the bottom of the list are buttons for 'Add Current User', 'Add...', and 'Remove'. At the very bottom of the window are navigation buttons: '< Back', 'Next >', 'Cancel', and 'Help'.

SQL Server 2012 Setup

## Complete

Your SQL Server 2012 installation completed successfully with product updates.

- Setup Support Rules
- Feature Selection
- Installation Rules
- Instance Configuration
- Disk Space Requirements
- Server Configuration
- Database Engine Configuration
- Error Reporting
- Installation Configuration Rules
- Installation Progress
- Complete**

Information about the Setup operation or possible next steps:

Feature	Status
✓ Database Engine Services	Succeeded
✓ SQL Browser	Succeeded
✓ SQL Writer	Succeeded
✓ SQL Client Connectivity	Succeeded
✓ SQL Client Connectivity SDK	Succeeded

Details:

**Viewing Product Documentation for SQL Server**

Only the components that you use to view and manage the documentation for SQL Server have been installed. By default, the Help Viewer component uses the online library. After installing SQL Server, you can use the Help Library Manager component to download documentation to your local computer. For more information, see [Use Microsoft Books Online for SQL Server <http://go.microsoft.com/fwlink/?LinkID=224683>](http://go.microsoft.com/fwlink/?LinkID=224683).

Summary log file has been saved to the following location:  
[C:\Program Files\Microsoft SQL Server\110\Setup Bootstrap\Log\20160311\\_123430\Summary\\_Z240-Win10\\_20160311\\_123430.txt](C:\Program Files\Microsoft SQL Server\110\Setup Bootstrap\Log\20160311_123430\Summary_Z240-Win10_20160311_123430.txt)

Close Help