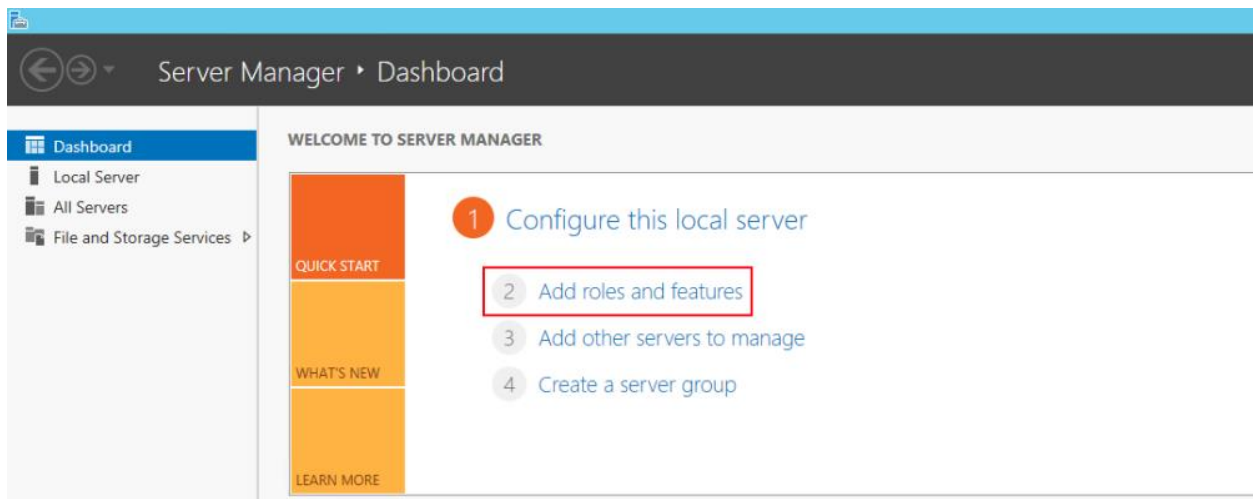
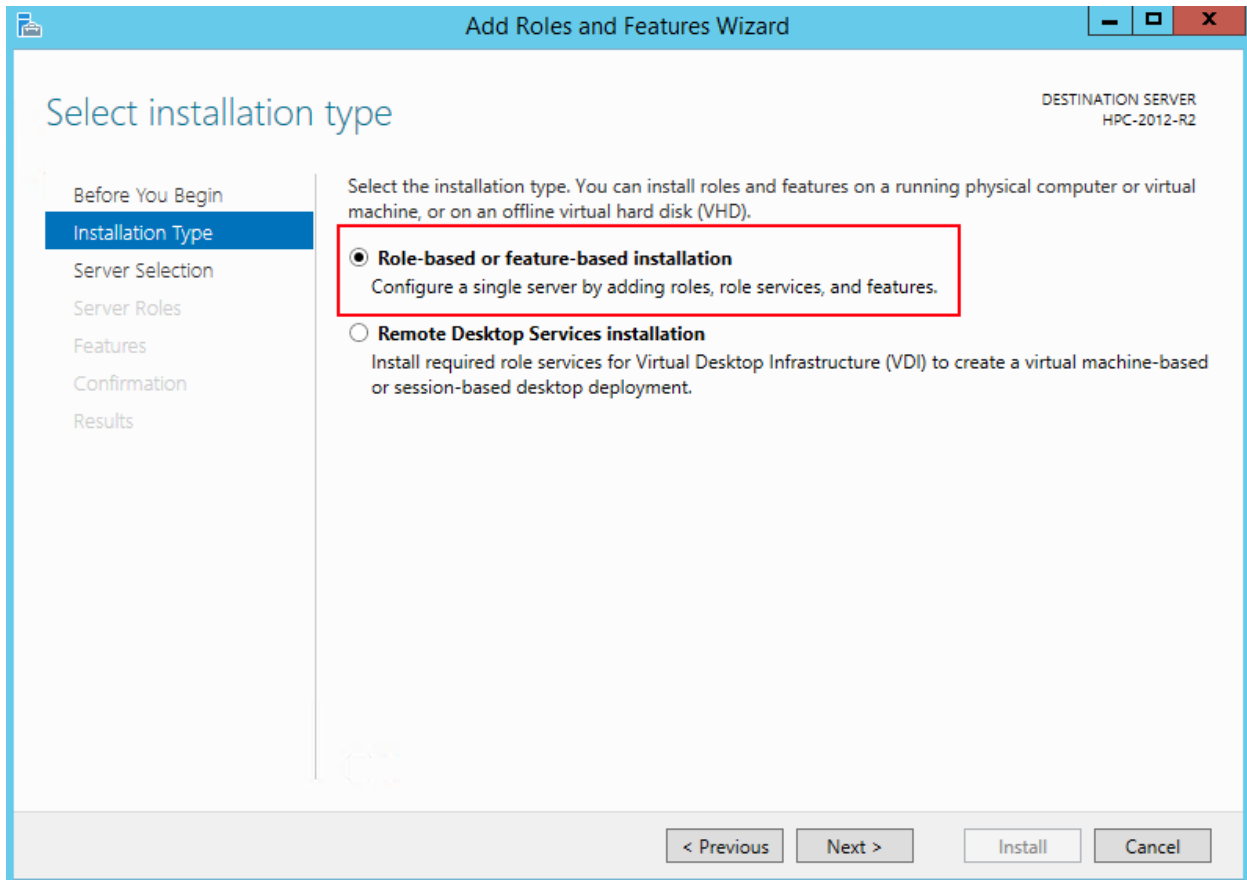


STEP BY STEP INSTRUCTIONS ON CONFIGURING IIS SETTINGS ON WINDOWS SERVER

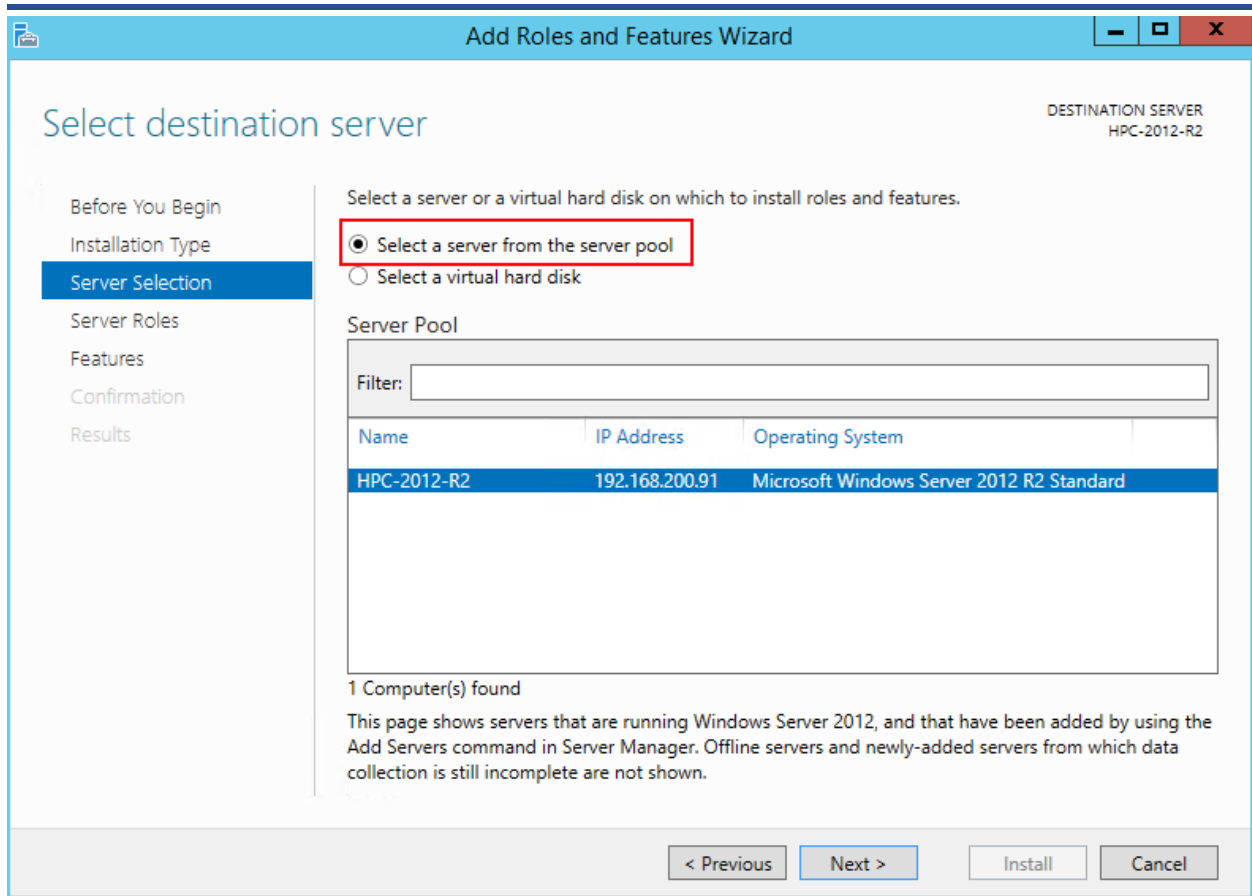
Click on add roles and features.



CHOOSE “ROLE-BASED” OR “FEATURE-BASED” INSTALLATION.



SELECT FROM THE SERVER POOL, AND SELECT THE SERVER YOU WANT TO INSTALL UPON.



The screenshot shows the 'Add Roles and Features Wizard' window. The title bar reads 'Add Roles and Features Wizard'. The main heading is 'Select destination server'. In the top right corner, it says 'DESTINATION SERVER HPC-2012-R2'. On the left, a navigation pane lists: 'Before You Begin', 'Installation Type', 'Server Selection' (highlighted), 'Server Roles', 'Features', 'Confirmation', and 'Results'. The main area contains the instruction: 'Select a server or a virtual hard disk on which to install roles and features.' Below this are two radio buttons: 'Select a server from the server pool' (which is selected and highlighted with a red box) and 'Select a virtual hard disk'. Underneath is a 'Server Pool' section with a 'Filter:' text box and a table. The table has three columns: 'Name', 'IP Address', and 'Operating System'. One row is visible: 'HPC-2012-R2', '192.168.200.91', and 'Microsoft Windows Server 2012 R2 Standard'. Below the table, it says '1 Computer(s) found' and a paragraph: 'This page shows servers that are running Windows Server 2012, and that have been added by using the Add Servers command in Server Manager. Offline servers and newly-added servers from which data collection is still incomplete are not shown.' At the bottom, there are four buttons: '< Previous', 'Next >', 'Install', and 'Cancel'.



CLICK APPLICATION SERVER.

Add Roles and Features Wizard

Select server roles

DESTINATION SERVER
HPC-2012-R2

Before You Begin
Installation Type
Server Selection
Server Roles
Features
Application Server
 Role Services
Web Server Role (IIS)
 Role Services
Confirmation
Results

Select one or more roles to install on the selected server.

Roles	Description
<input checked="" type="checkbox"/> Application Server	
<input type="checkbox"/> DHCP Server	
<input type="checkbox"/> DNS Server	
<input type="checkbox"/> Fax Server	
<input checked="" type="checkbox"/> File and Storage Services (1 of 12 installed)	
<input type="checkbox"/> Hyper-V	
<input type="checkbox"/> Network Policy and Access Services	
<input type="checkbox"/> Print and Document Services	
<input type="checkbox"/> Remote Access	

Web Server (IIS) provides a reliable, manageable, and scalable Web application infrastructure.

CHOOSE THE .NET FRAMEWORK 3.5 FEATURES.

Select features

- Before You Begin
- Installation Type
- Server Selection
- Server Roles
- Features
- Application Server
 - Role Services
- Web Server Role (IIS)
 - Role Services
- Confirmation
- Results

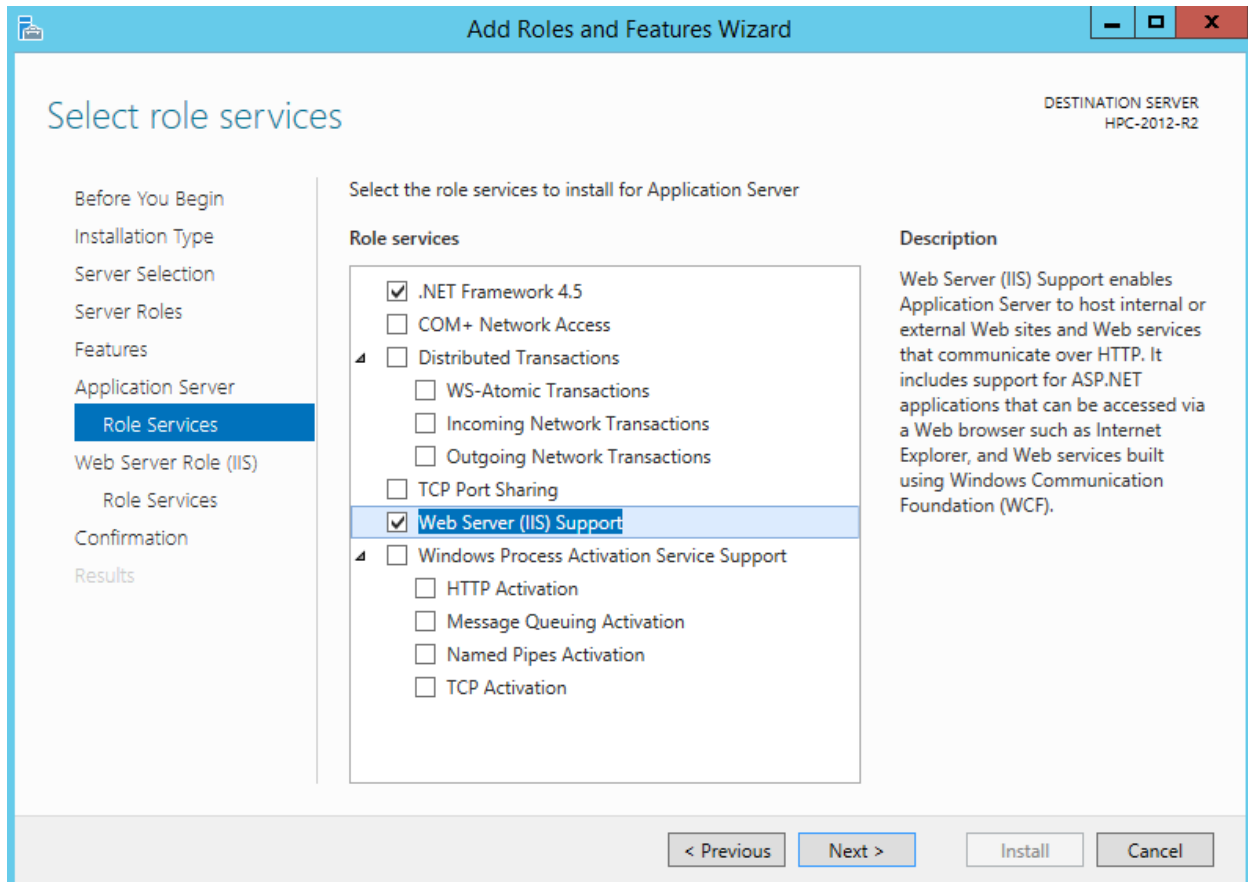
DESTINATION SERVER
HPC-2012-R2

Select one or more features to install on the selected server.

Features	Description
<input checked="" type="checkbox"/> .NET Framework 3.5 Features <ul style="list-style-type: none"> <input checked="" type="checkbox"/> .NET Framework 3.5 (includes .NET 2.0 and 3.0) <input checked="" type="checkbox"/> HTTP Activation <input checked="" type="checkbox"/> Non-HTTP Activation 	IIS Hostable Web Core enables you to write custom code that will host core IIS functionality in your own application. HWC enables your application to serve HTTP requests and use its own applicationHost.config and root web.config configuration files. The HWC application extension is contained in the hwebcore.dll file.
<input type="checkbox"/> .NET Framework 4.5 Features (2 of 7 installed)	
<input type="checkbox"/> Background Intelligent Transfer Service (BITS)	
<input type="checkbox"/> BitLocker Drive Encryption	
<input type="checkbox"/> BitLocker Network Unlock	
<input type="checkbox"/> BranchCache	
<input type="checkbox"/> Client for NFS	
<input type="checkbox"/> Data Center Bridging	
<input type="checkbox"/> Direct Play	
<input type="checkbox"/> Enhanced Storage	
<input type="checkbox"/> Failover Clustering	

< Previous
Next >
Install
Cancel

SELECT WEB SERVER.



Add Roles and Features Wizard

DESTINATION SERVER
HPC-2012-R2

Select role services

Before You Begin
Installation Type
Server Selection
Server Roles
Features
Application Server
Role Services
Web Server Role (IIS)
Role Services
Confirmation
Results

Select the role services to install for Application Server

Role services	Description
<input checked="" type="checkbox"/> .NET Framework 4.5	
<input type="checkbox"/> COM+ Network Access	
<input type="checkbox"/> Distributed Transactions	
<input type="checkbox"/> WS-Atomic Transactions	
<input type="checkbox"/> Incoming Network Transactions	
<input type="checkbox"/> Outgoing Network Transactions	
<input type="checkbox"/> TCP Port Sharing	
<input checked="" type="checkbox"/> Web Server (IIS) Support	Web Server (IIS) Support enables Application Server to host internal or external Web sites and Web services that communicate over HTTP. It includes support for ASP.NET applications that can be accessed via a Web browser such as Internet Explorer, and Web services built using Windows Communication Foundation (WCF).
<input type="checkbox"/> Windows Process Activation Service Support	
<input type="checkbox"/> HTTP Activation	
<input type="checkbox"/> Message Queuing Activation	
<input type="checkbox"/> Named Pipes Activation	
<input type="checkbox"/> TCP Activation	

< Previous Next > Install Cancel

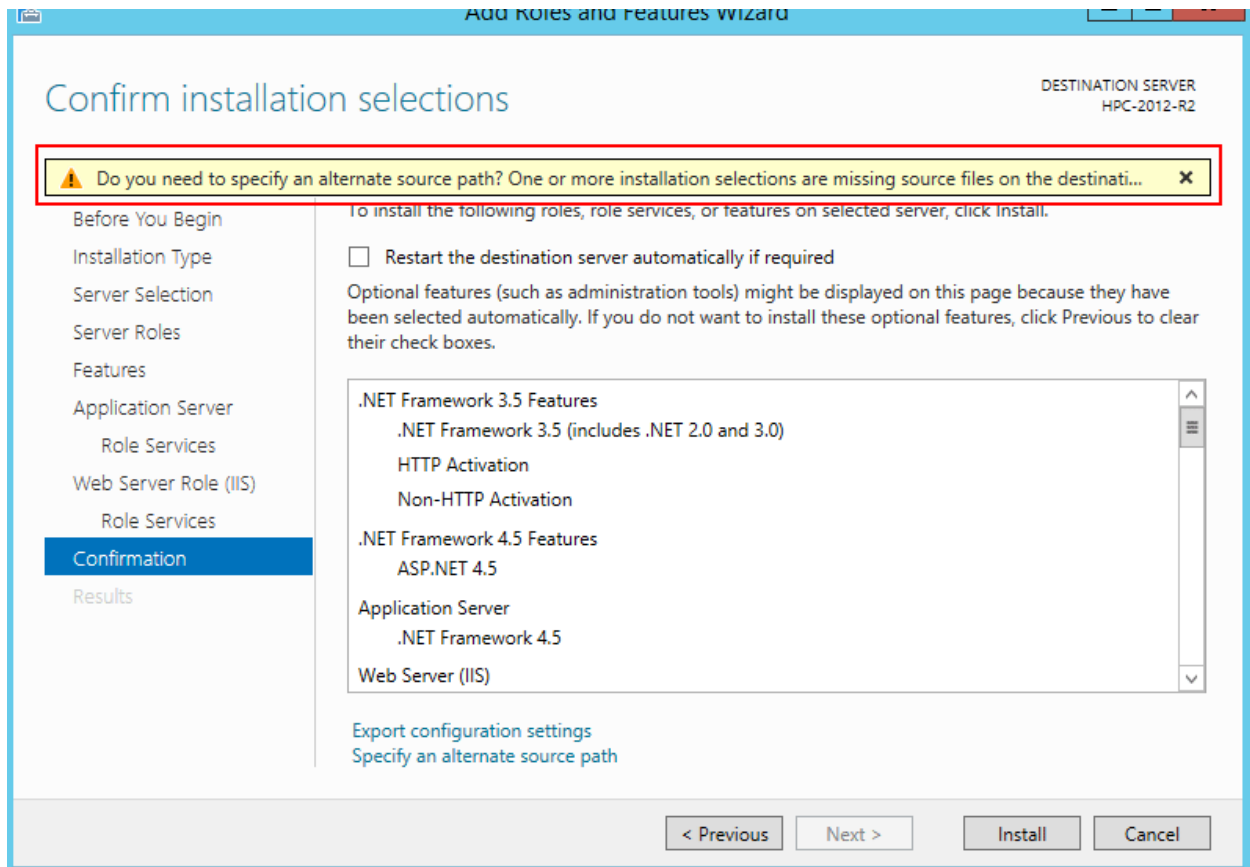


SELECT THESE OPTIONS FOR THE WEB SERVER.

The screenshot shows the 'Select role services' window for the Web Server (IIS) role. The left sidebar contains a navigation menu with the following items: Before You Begin, Installation Type, Server Selection, Server Roles, Features, Application Server, Role Services, Web Server Role (IIS), Role Services (highlighted), Confirmation, and Results. The main area is titled 'Select the role services to install for Web Server (IIS)'. Under the 'Role services' section, the following options are listed with their selection status:

- Web Server
 - Common HTTP Features
 - Default Document
 - Directory Browsing
 - HTTP Errors
 - Static Content
 - HTTP Redirection
 - WebDAV Publishing
 - Health and Diagnostics
 - HTTP Logging
 - Custom Logging
 - Logging Tools
 - ODBC Logging
 - Request Monitor
 - Tracing
 - Performance
 - Static Content Compression
 - Dynamic Content Compression
 - Security
 - Request Filtering
 - Basic Authentication
 - Centralized SSL Certificate Support
 - Client Certificate Mapping Authentication
 - Digest Authentication
 - IIS Client Certificate Mapping Authentication
 - IP and Domain Restrictions
 - URL Authorization
 - Windows Authentication
 - Application Development
 - .NET Extensibility 3.5
 - .NET Extensibility 4.5
 - Application Initialization
 - ASP
 - ASP.NET 3.5
 - ASP.NET 4.5
 - CGI
 - ISAPI Extensions
 - ISAPI Filters
 - Server Side Includes
 - WebSocket Protocol
 - FTP Server
 - FTP Service
 - FTP Extensibility
 - Management Tools
 - IIS Management Console
 - IIS 6 Management Compatibility
 - IIS 6 Metabase Compatibility
 - IIS 6 Management Console
 - IIS 6 Scripting Tools
 - IIS 6 WMI Compatibility
 - IIS Management Scripts and Tools
 - Management Service

IF YOU SEE THIS WARNING, SPECIFY WHERE TO FIND THE FILES FOR THE IIS. THIS WILL BE DONE MANUALLY BY YOU.





SELECT THE OPTION AT THE BOTTOM THAT READS, “SPECIFY AN ALTERNATE SOURCE PATH.” ON THIS SCREEN, TYPE IN WHERE THE INSTALLATION MEDIA, OR ISO, IS ATTACHED.

Add Roles and Features Wizard

Specify Alternate Source Path

Some servers might not have all source files available to add all roles, role services, or features. The source files might not have been installed, or might have been removed by users after the operating system was installed.

If the server on which you want to install roles or features does not have all required source files, the server can try to get files by using Windows Update, or from a location that is specified by Group Policy.

You can also specify an alternate path for the source files, if the destination server does not have them. The source path or file share must grant Read permissions either to the Everyone group (not recommended for security reasons), or to the computer (local system) account of the destination server; granting user account access is not sufficient.

The following are examples of a valid source file path where the destination server is the local server, and where the E: drive contains the Windows Server installation media.

Source files for .NET Framework 3.5 Features are not installed as part of a typical installation, but are available in the side-by-side store (SxS) folder:
E:\Sources\SxS\

Source files for other features are available in the Install.wim file. Add the WIM: prefix to the path, and a suffix to indicate the index of the image from which to get source files. In the following example, the index is 4:
WIM:E:\Sources\Install.wim:4

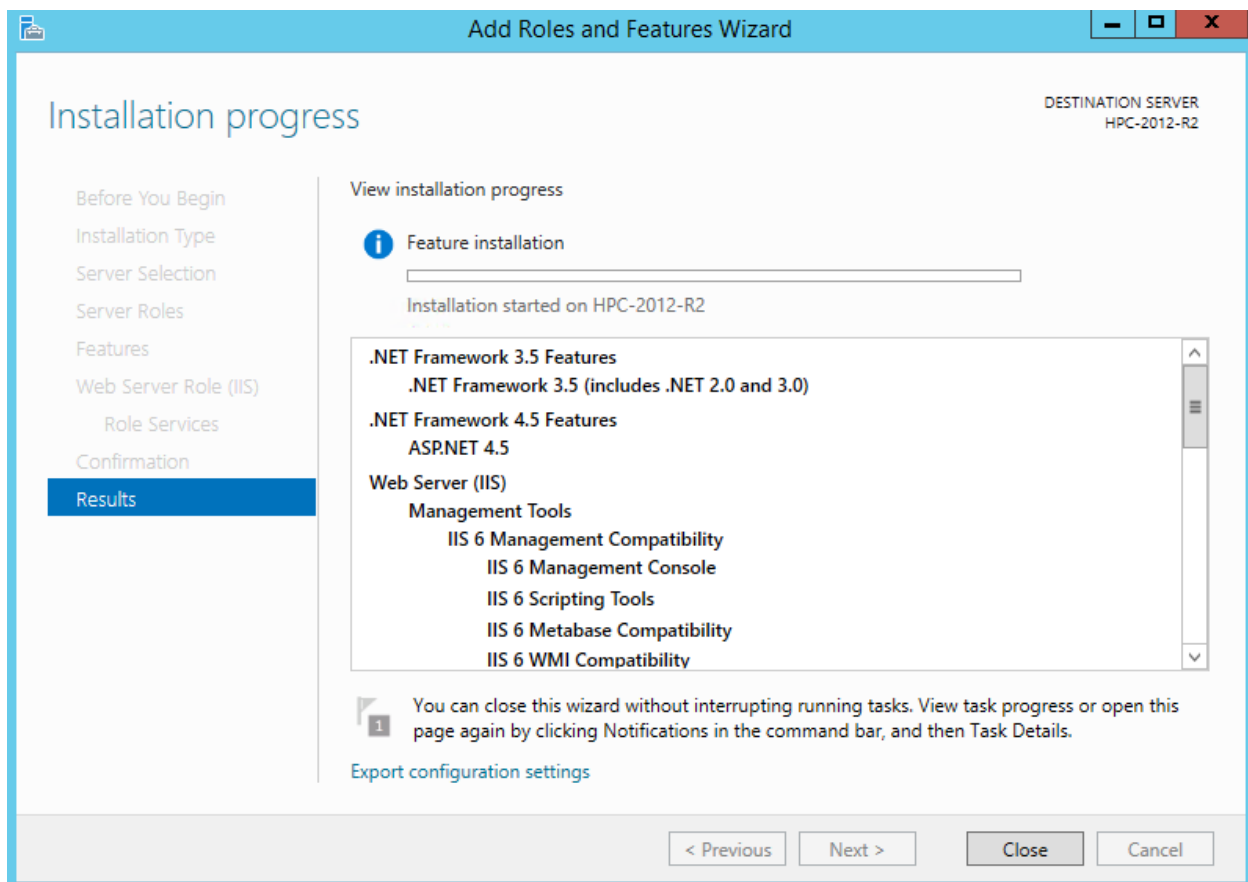
Path:

OK Cancel

INSTALLATION SHOULD PROCEED NORMALLY.

Confirm there are no errors.

Select “install and finish.”





SUMMARY OF WINDOWS SERVER 2012 R2 – IIS SETTINGS

Select role services

Before You Begin
Installation Type
Server Selection
Server Roles
Features
Application Server:
Role Services
Web Server Role (IIS)
Role Services
Confirmation
Results

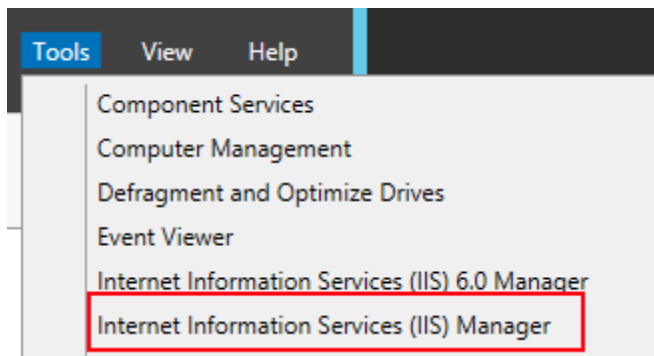
Select the role services to install for Web Server (IIS)

Role services

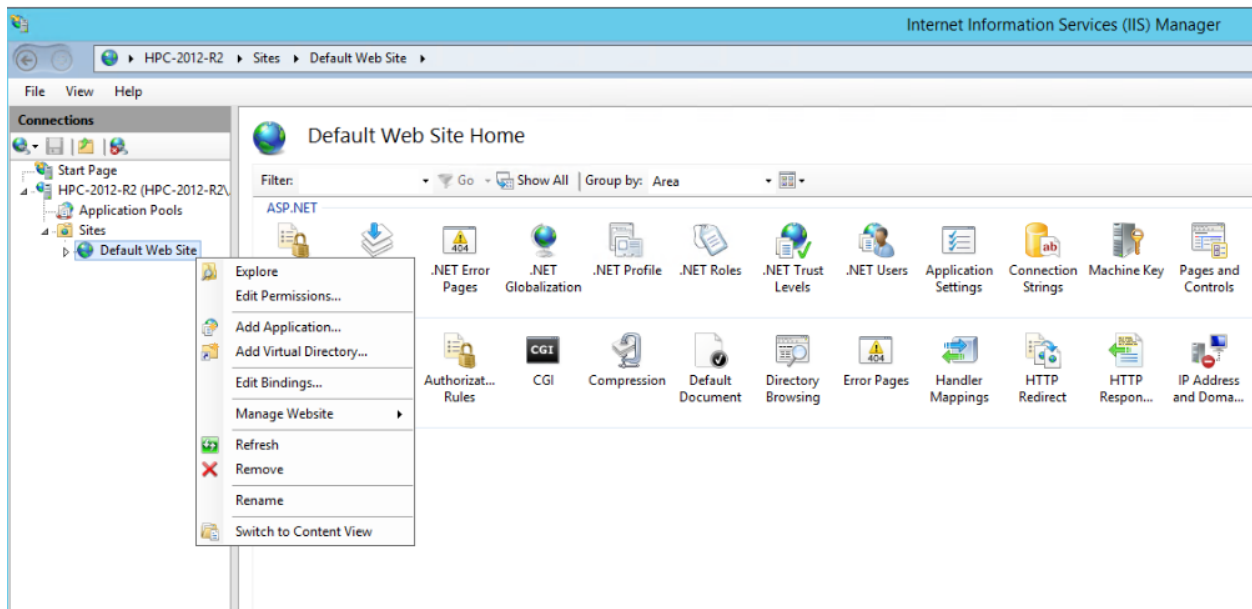
- Web Server
 - Common HTTP Features
 - Default Document
 - Directory Browsing
 - HTTP Errors
 - Static Content
 - HTTP Redirection
 - WebDAV Publishing
 - Health and Diagnostics
 - HTTP Logging
 - Custom Logging
 - Logging Tools
 - ODBC Logging
 - Request Monitor
 - Tracing
 - Performance
 - Static Content Compression
 - Dynamic Content Compression
 - Security
 - Request Filtering
 - Basic Authentication
 - Centralized SSL Certificate Support
 - Client Certificate Mapping Authentication
 - Digest Authentication
 - IIS Client Certificate Mapping Authentication
 - IP and Domain Restrictions
 - URL Authorization
 - Windows Authentication
 - Application Development
 - .NET Extensibility 3.5
 - .NET Extensibility 4.5
 - Application Initialization
 - ASP
 - ASP.NET 3.5
 - ASP.NET 4.5
 - CGI
 - ISAPI Extensions
 - ISAPI Filters
 - Server Side Includes
 - WebSocket Protocol
 - FTP Server
 - FTP Service
 - FTP Extensibility
 - Management Tools
 - IIS Management Console
 - IIS 6 Management Compatibility
 - IIS 6 Metabase Compatibility
 - IIS 6 Management Console
 - IIS 6 Scripting Tools
 - IIS 6 WMI Compatibility
 - IIS Management Scripts and Tools
 - Management Service

IT IS RECOMMENDED THAT YOU REMOVE THE DEFAULT WEB SITE THAT IS CREATED WHEN SETTING UP IIS FOR THE FIRST TIME.

Select Internet Information Services (IIS) Manager in the Server Manager.



LEFT CLICK ON DEFAULT WEBSITE AND CLICK REMOVE.



You have now completed setting up IIS on Server 2012. Next, you can install SQL.