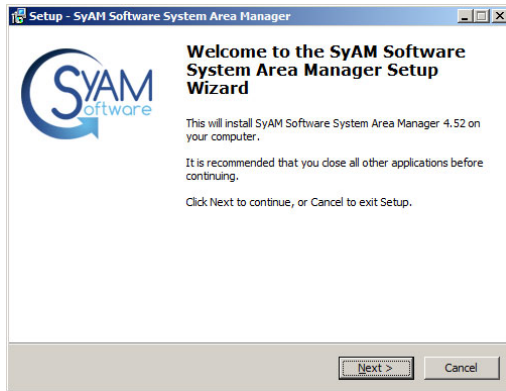
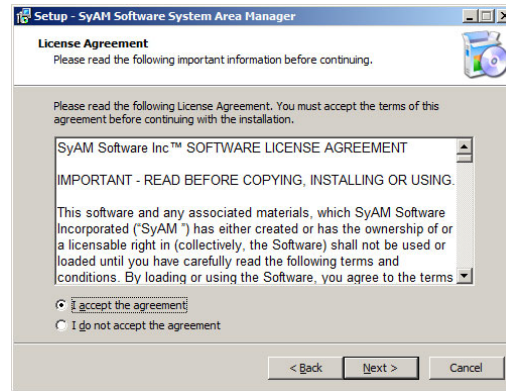


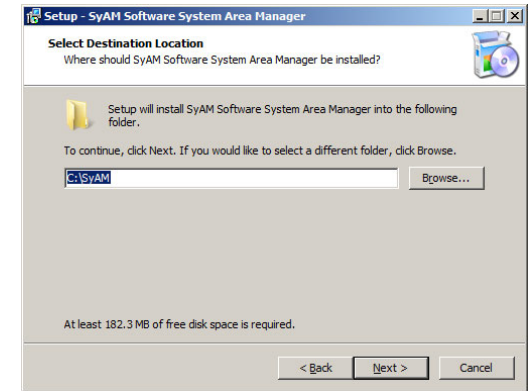
System Area Manager - Installation Guide



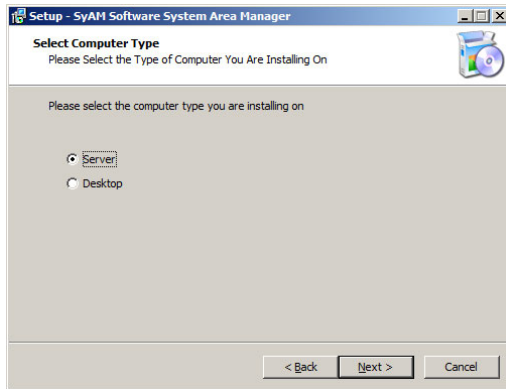
After the software checks to see if you have a version of the software already installed you can continue the installation



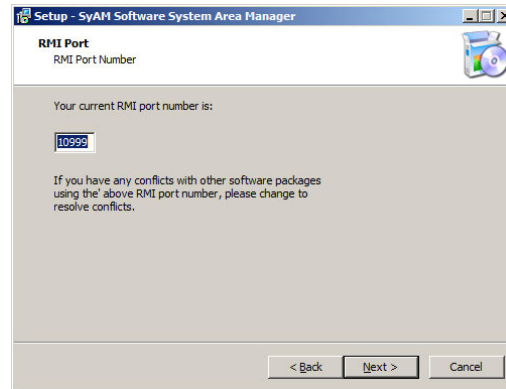
Review the End User License Agreement, choose I accept to continue the installation



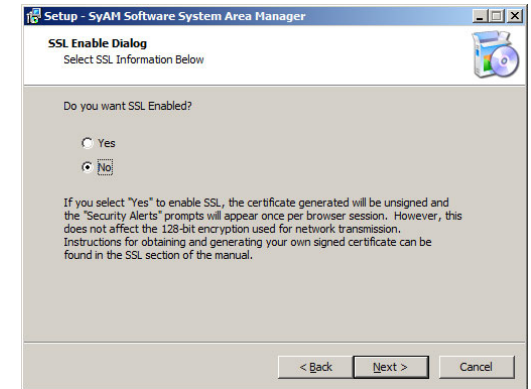
This is the location where the application will be installed, the folder name must not contain spaces



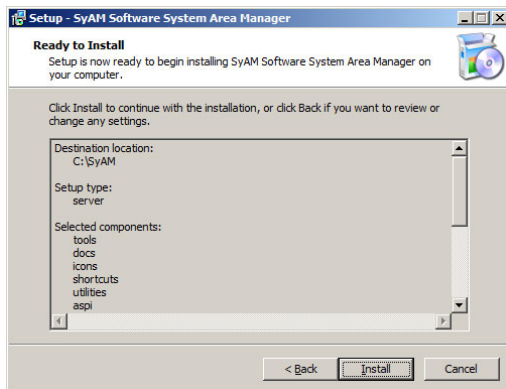
The System Area Manager installs either as a server or desktop agent



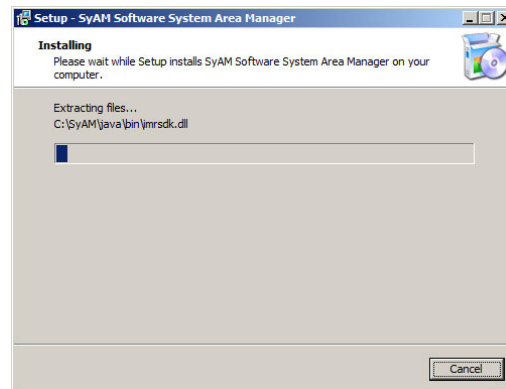
Leave the RMI Port to 10999 unless you have another application using that port number. If in use change the port number on the installer to an available port number



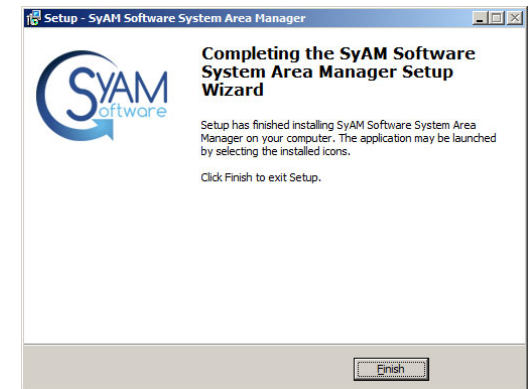
By selecting SSL you will use HTTPS instead of HTTP when browsing to the interface. This setting can not be changed after installation



Review the settings and press Next to install



Installation progress is shown



Once installation is finished the software will initialize itself automatically