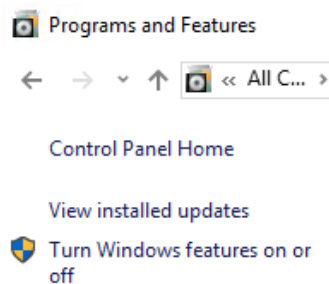


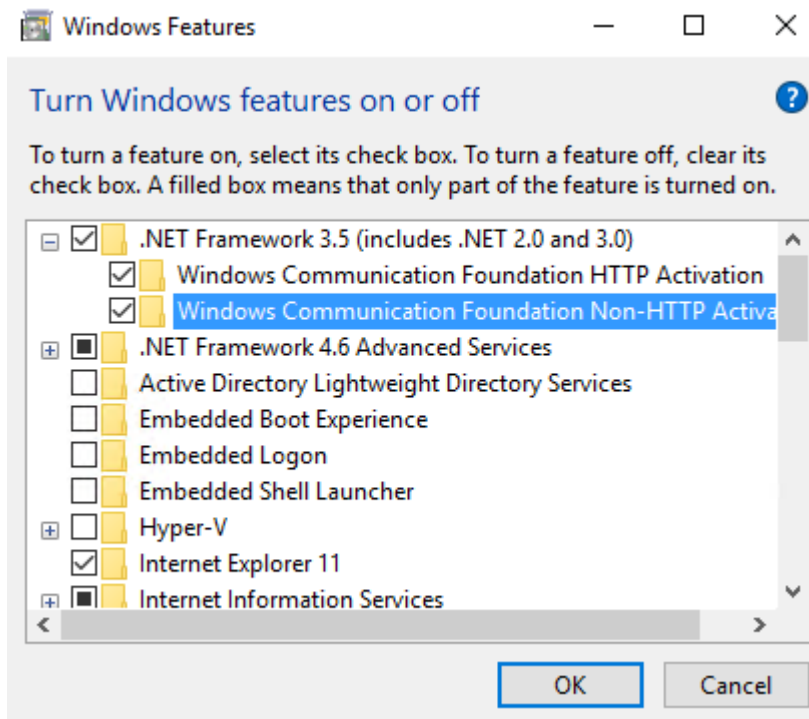
STEP BY STEP INSTRUCTIONS CONFIGURING INTERNET INFORMATION SERVICES (IIS) ON WINDOWS 10

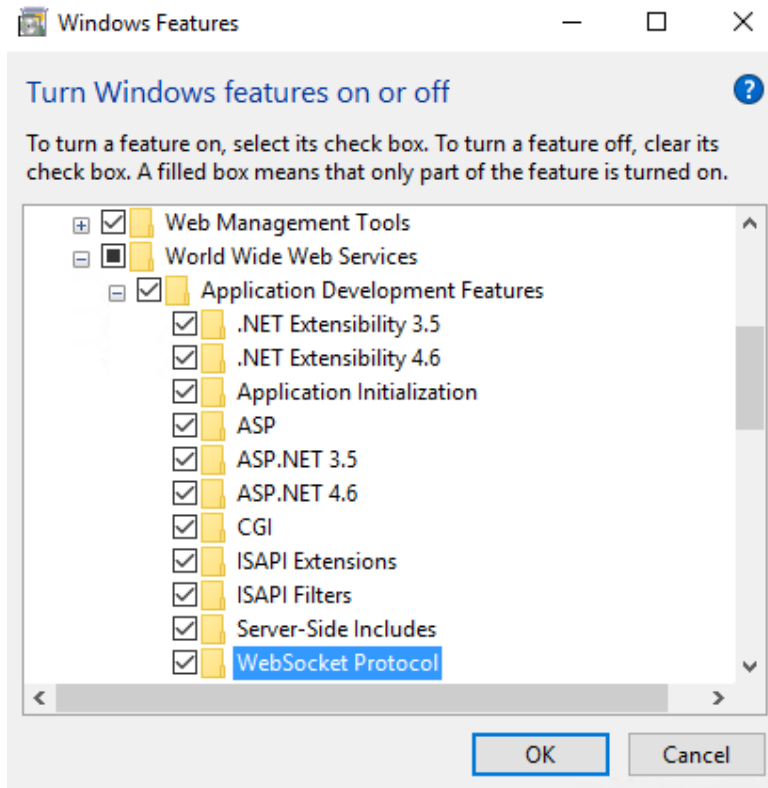
Control Panel – Programs and Features

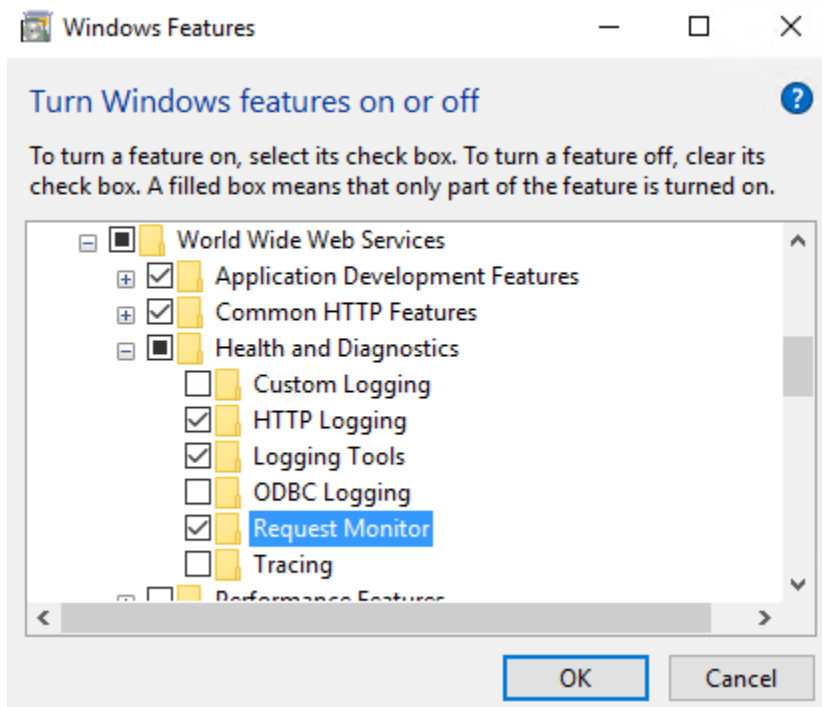
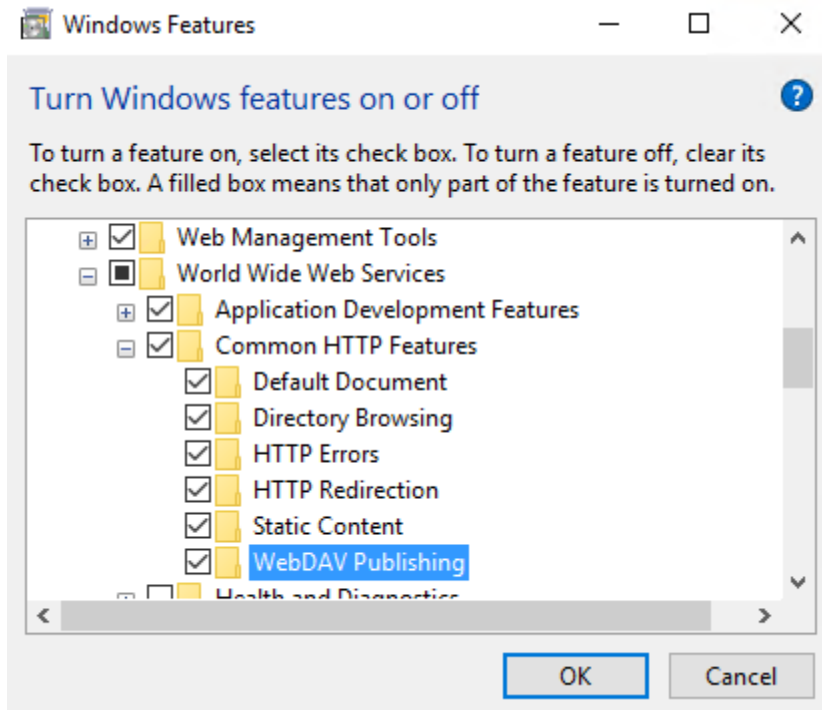
SELECT TURN WINDOWS FEATURES ON OR OFF.

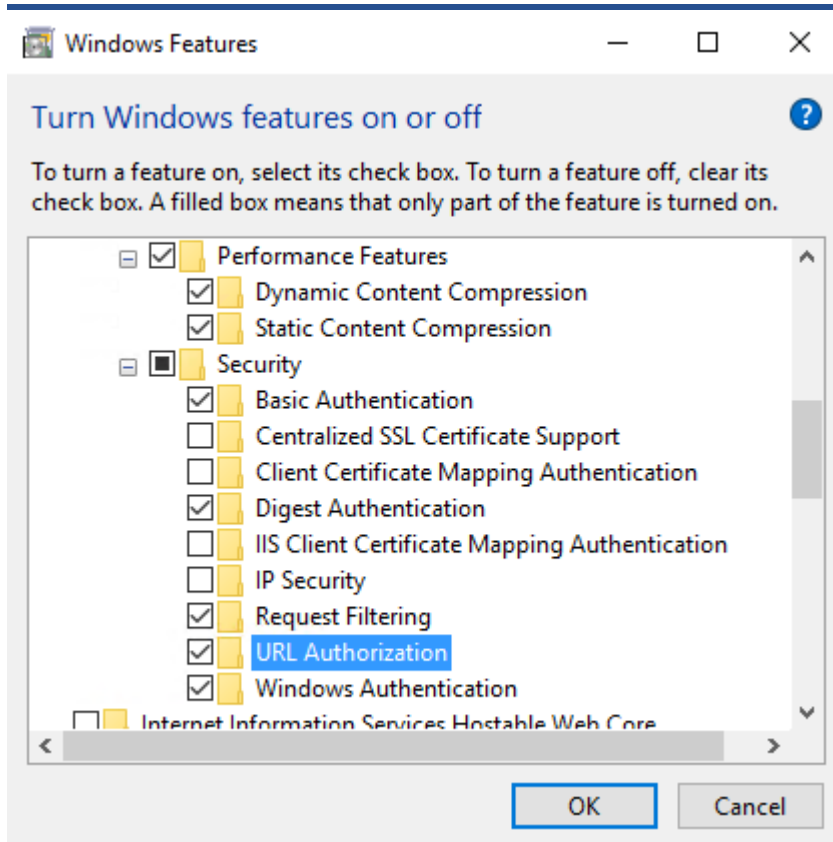


SELECT THE FOLLOWING FEATURES AS FOLLOWS:

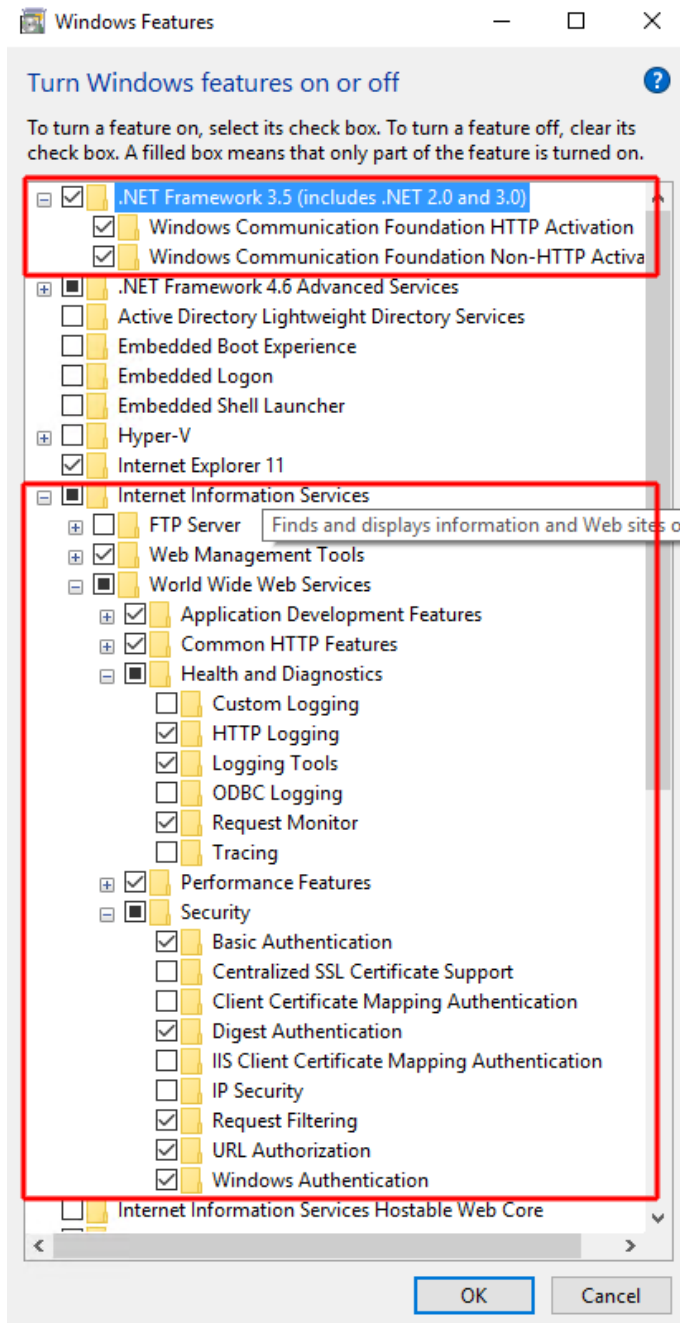








SUMMARY OF WINDOWS 10 – IIS SETTINGS



Press OK to start installation.



SELECT DOWNLOAD FILES FROM WINDOWS UPDATE.



←  Windows Features

Windows needs files from Windows Update to finish installing some features.

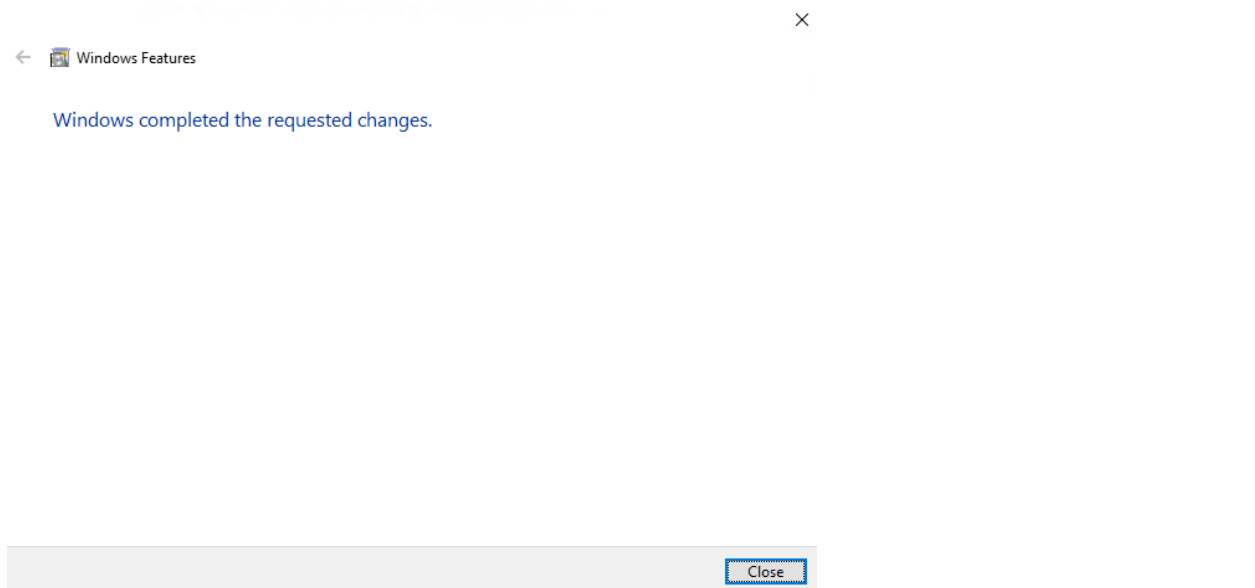
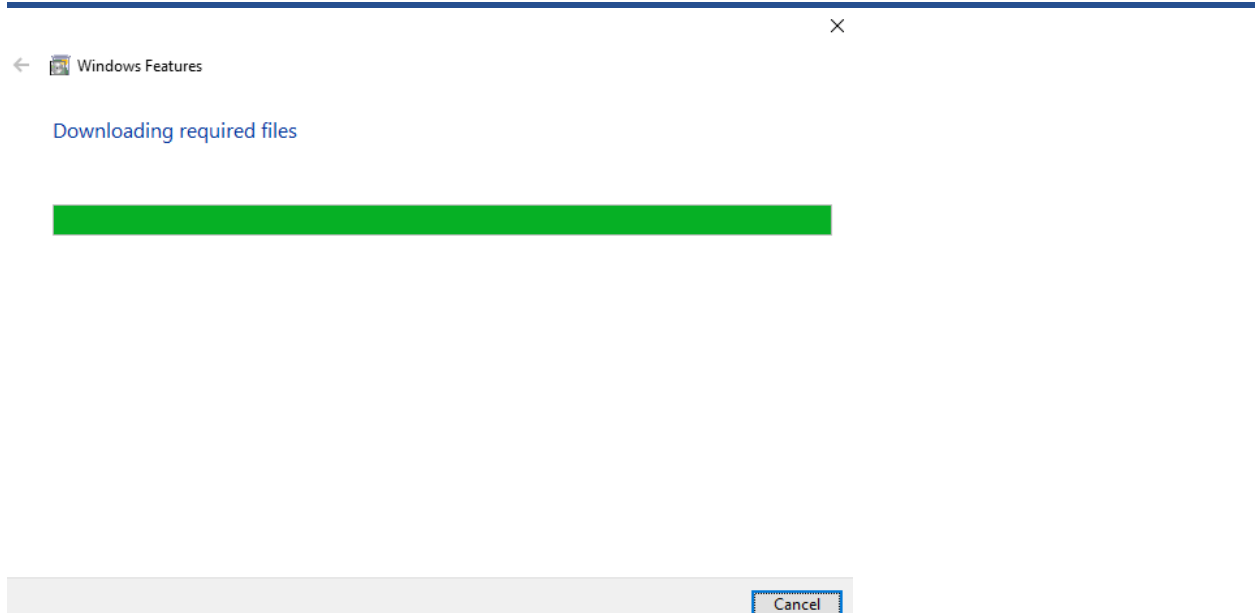
→ Download files from Windows Update

→ Don't connect to Windows Update
No changes will be made to your PC.

Cancel

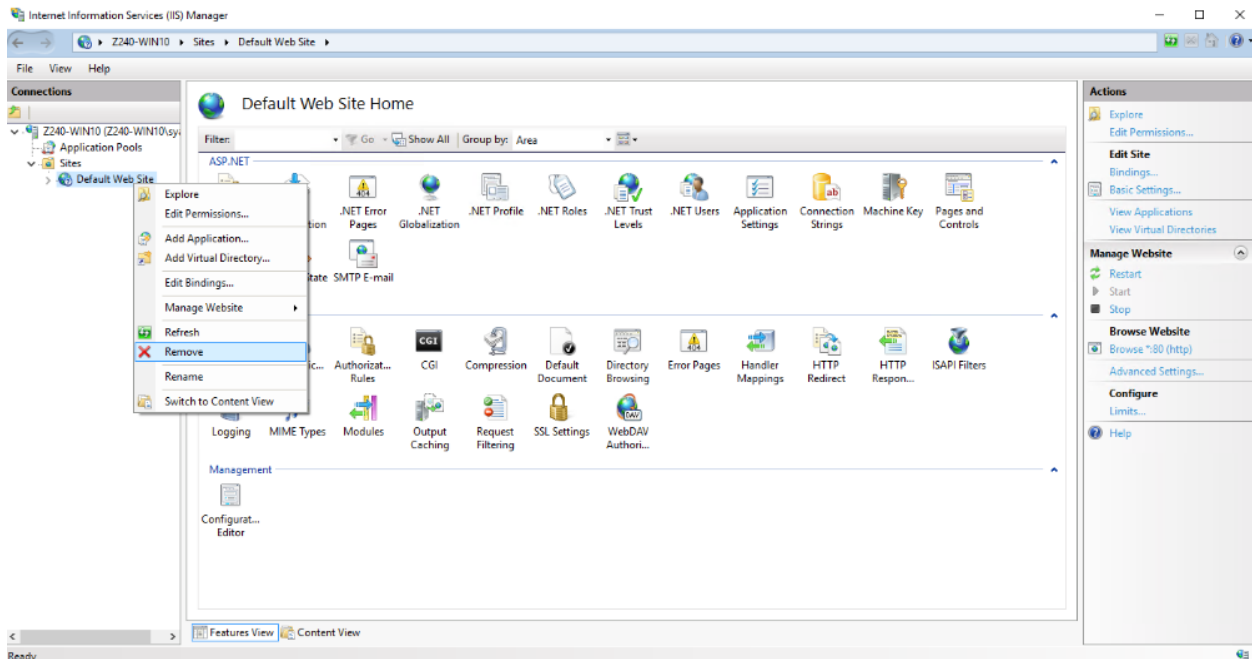


Quick Reference IIS – Windows 10



WE RECOMMEND THAT YOU REMOVE THE DEFAULT WEB SITE THAT IS CREATED WHEN SETTING UP IIS FOR THE FIRST TIME.

Control Panel – Administrative Tools – Internet Information Services (IIS) Manager



PLEASE NOTE

You must remove the MIME type WOFF2 before installing Management Utilities V5.22 or above; as this will conflict with the user interface.

You have now completed setting up IIS on Windows 10 – Now install the SQL.