

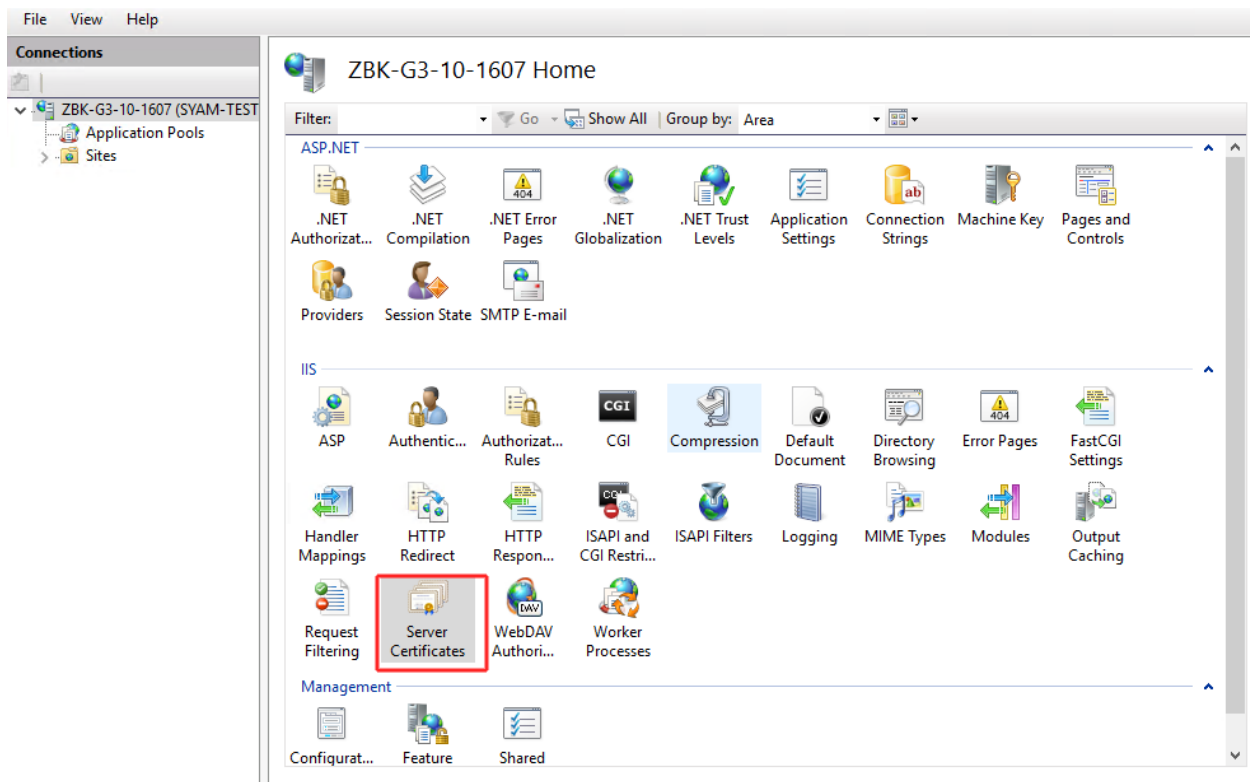


Quick Reference Installing SSL Certificate into IIS Server 2016 – Windows 10 v16.7

When installing SyAM Site Manager or Management Utilities on a Windows 10 Version 16.7 or Server 2016 you need to manually add the SSL Certificate to IIS after installation.

Open IIS Manager – Control Panel – Administrative Tool- Internet Information Services (IIS) Manager

Select the server name on the right-hand tree, then double click Server Certificates.





Quick Reference Installing SSL Certificate into IIS Server 2016 – Windows 10 v16.7

Select Import on the right hand menu

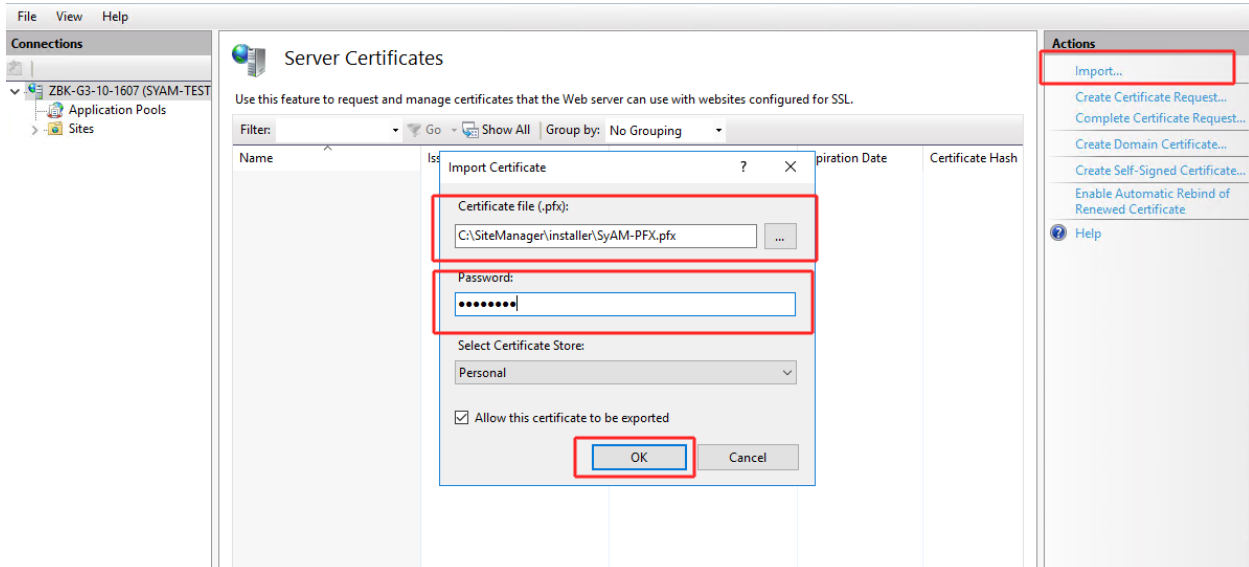
Then enter the path to where the pfx certificate file is located.

C:\sitemanager\installer\syam-pfx.pfx

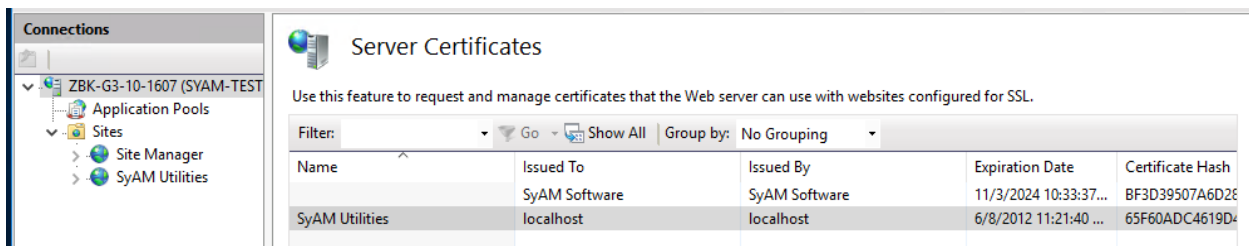
C:\syamutilities\installer\installcert.pfx

Select the file and enter the password SyAM123\$

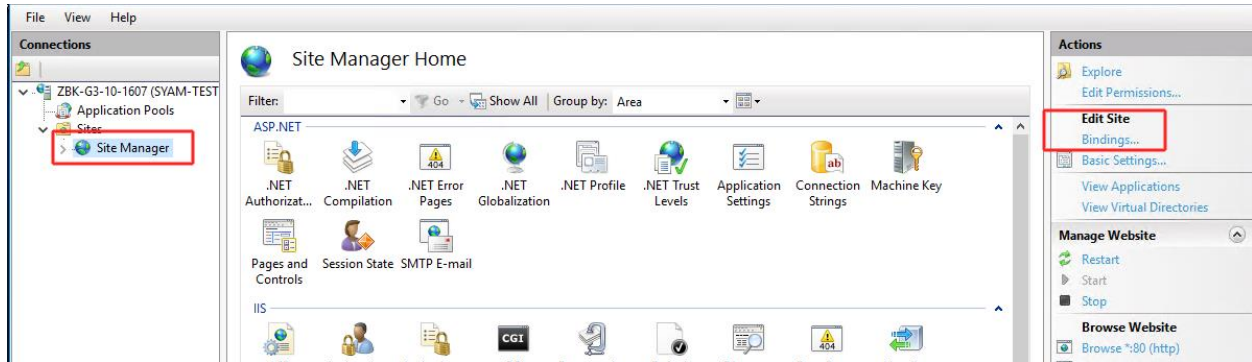
Press OK to import



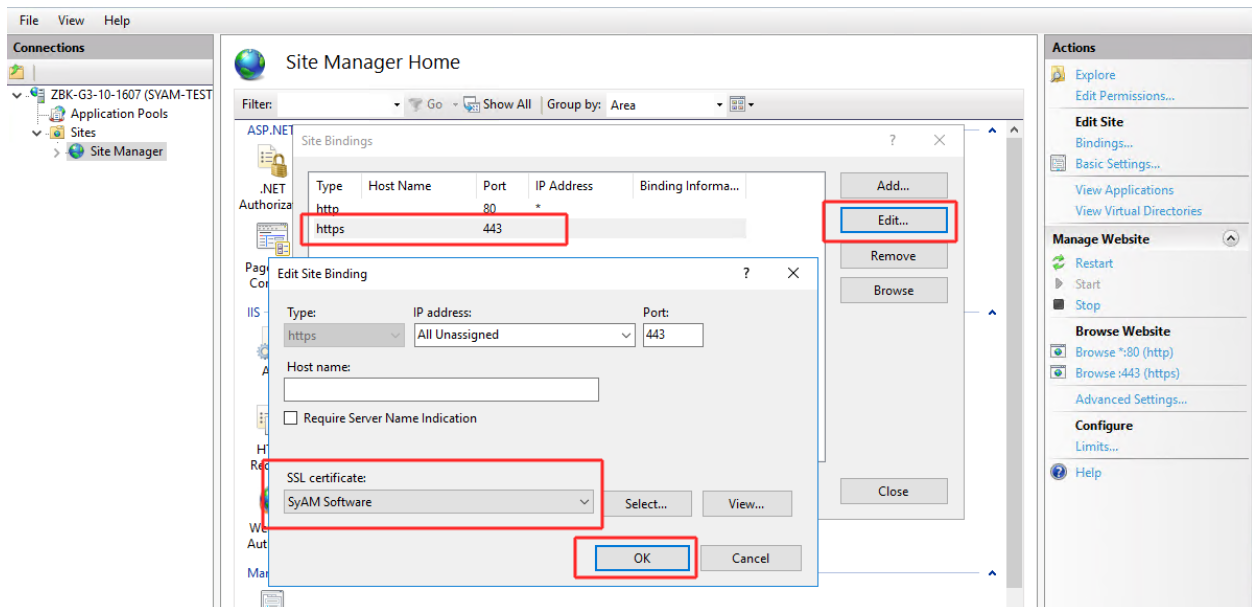
Imported certificates are now listed under Server Certificates



Select Site Manager from the sites and click on Bindings on the right hand menu

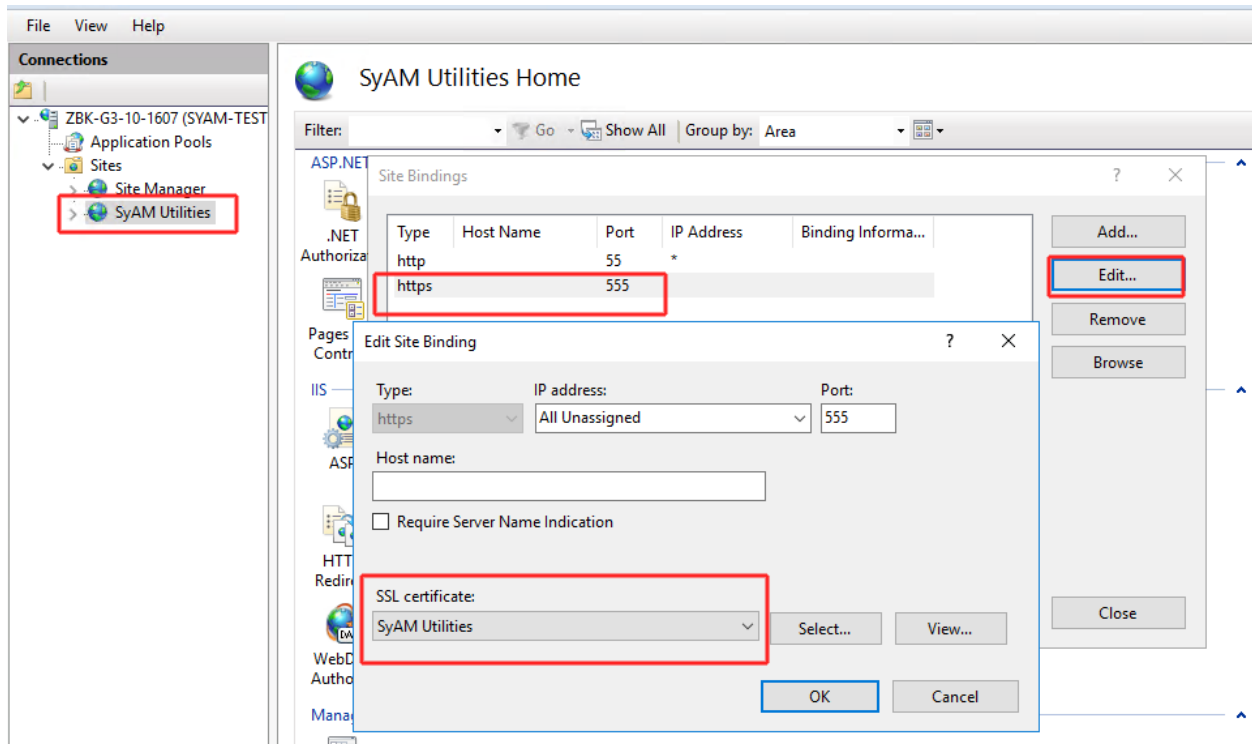


Click on port 443 and press edit, now select the SSL certificate you have imported for Site Manager and press OK



The SSL certificate is now bound to port 443 Site Manager

For Management Utilities click on port 555 and press edit, now select the SSL certificate you have imported for Management Utilities and press OK



The SSL certificate is now bound to port 555 for Management Utilities