

SyAM Software™

SyAM Software Tool Tip: Using Microsoft SMS for deploying SyAM Software

Overview:

This document provides an overview of how to deploy SyAM Software throughout your organization using Microsoft's Systems Management Server (SMS).

Requirements:

- SMS installed and running.
- A pre-existing SMS collection of systems targeted for deployment (this is not necessarily a requirement, but it is easier than manually selecting the systems to distribute the executable to)
- An install file from SyAM Software (the executable used in this tool tip was syam_server_agent_local_3.10.exe.
- One or more systems setup as SMS distribution points.

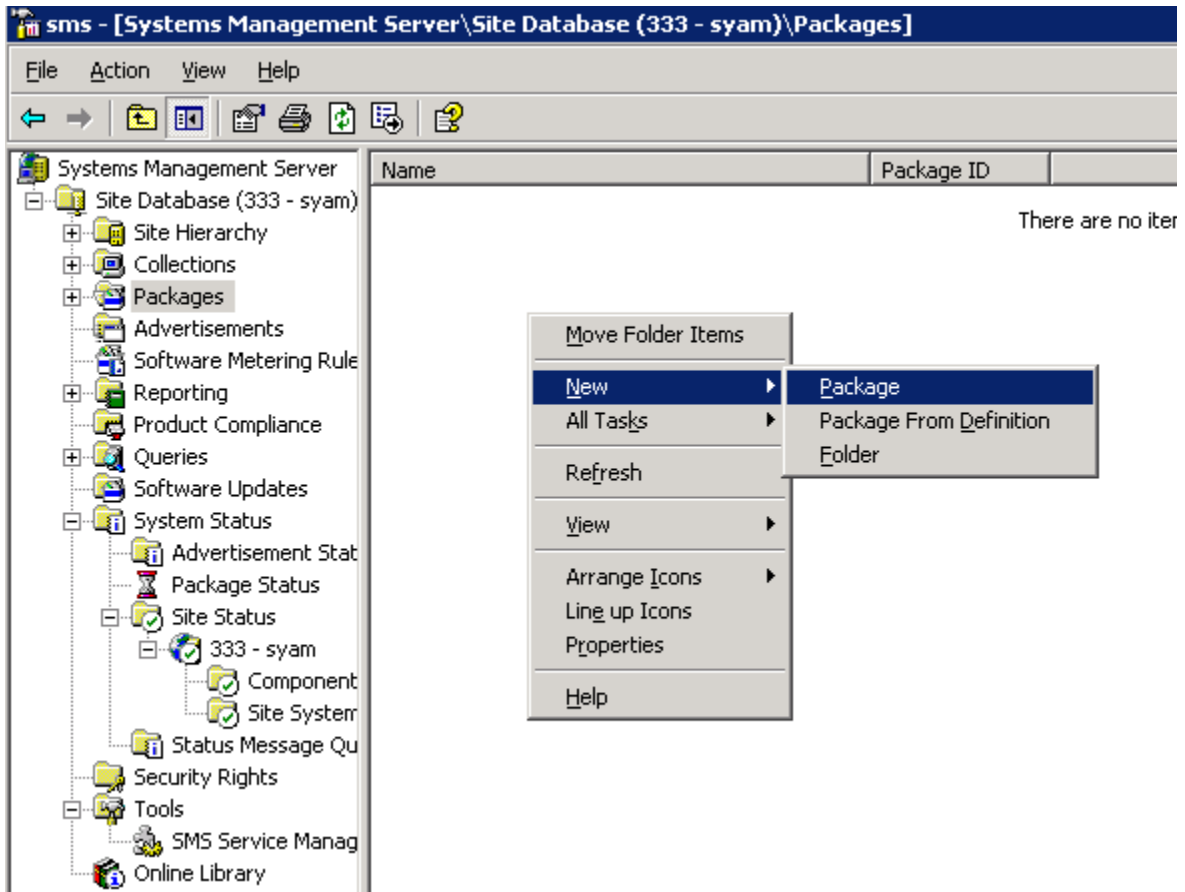
Benefits:

Provides an easy mechanism to deploy SyAM's product throughout the enterprise which is already running SMS.

Step by Step Guide:

1. Copy SyAM's executable to the SMS server, or make sure the package is accessible to the SMS server.
2. Start the SMS Administrator Console (Start -> Programs -> Systems Management Server -> SMS Administrator Console.
3. On the left, expand "Site Database (XXX – Y)", where XXX is the three digit code for the SMS site you wish to deploy to.

4. On the left, click "Packages". On the right, right-click and select New -> Package:



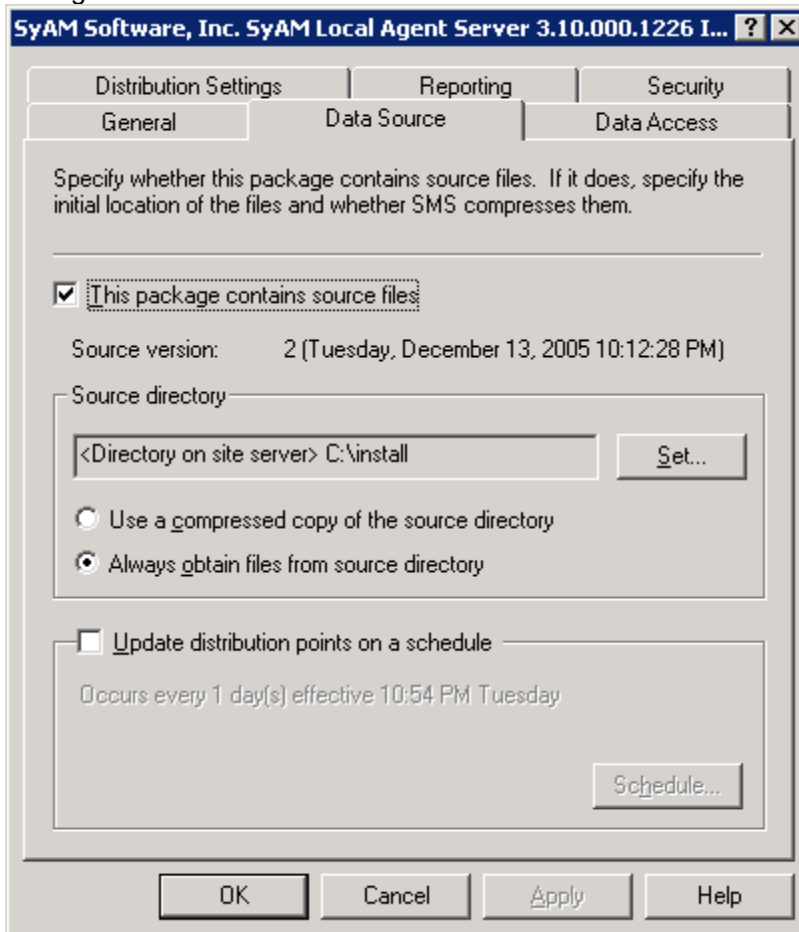
5. On the General tab, enter information about the executable package:

The screenshot shows the 'Package Properties' dialog box with the 'General' tab selected. The dialog has a title bar with a question mark and a close button. Below the title bar are three tabs: 'Distribution Settings', 'Reporting', and 'Security'. Under 'Distribution Settings', there are three sub-tabs: 'General' (selected), 'Data Source', and 'Data Access'. The 'General' tab contains the following fields:

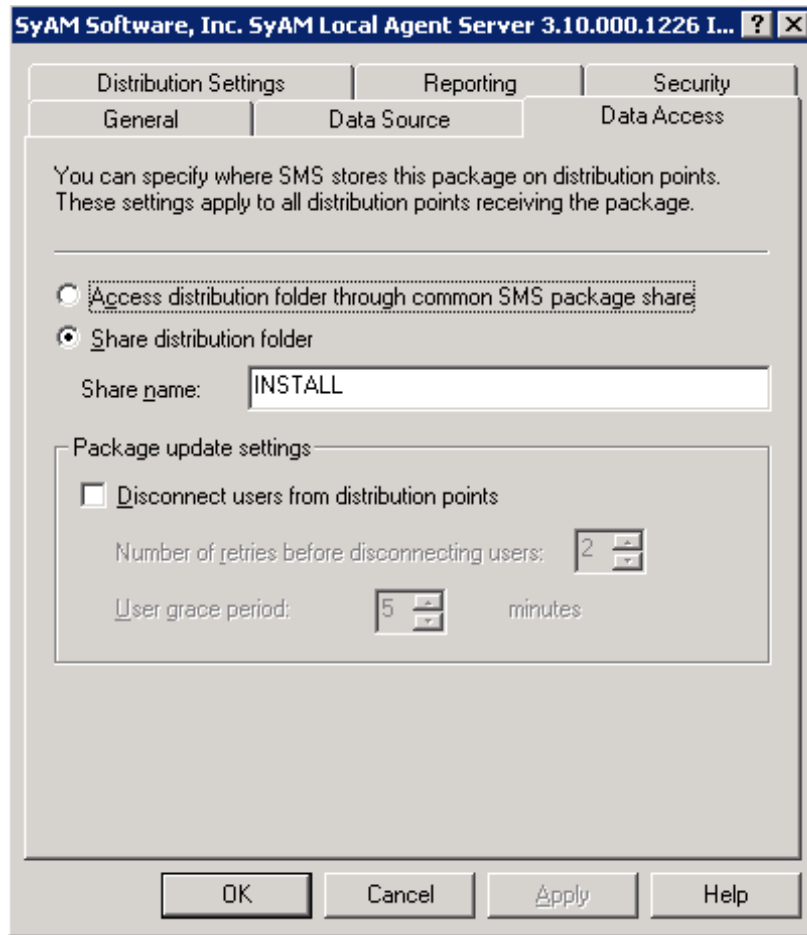
- Icon:** A small icon of a folder with a document, next to the text 'SyAM Software, Inc. SyAM Local Agent Ser'. A 'Change Icon...' button is to the right.
- Name:** A text box containing 'SyAM Local Agent'.
- Version:** A text box containing 'Server 3.10.000.1226 IA32 Open'.
- Publisher:** A text box containing 'SyAM Software, Inc.'.
- Language:** A text box containing 'English'.
- Comment:** A large empty text area with a vertical scrollbar on the right.

At the bottom of the dialog are four buttons: 'OK', 'Cancel', 'Apply', and 'Help'.

6. Click the “Data Source” tab. Be sure to check the box “This package contains source files” and to set the source directory to the directory where you placed the executable file. In the end, the screen should look something like this:

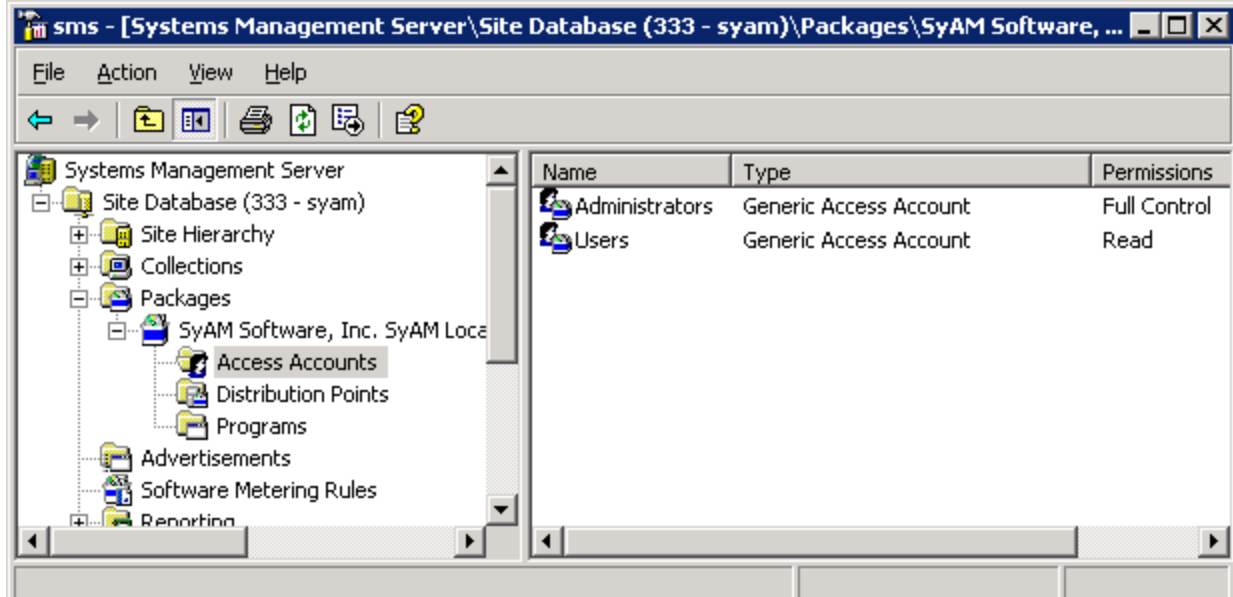


7. Click the "Data Access" tab and configure as show below (you may choose a different share name if you wish):

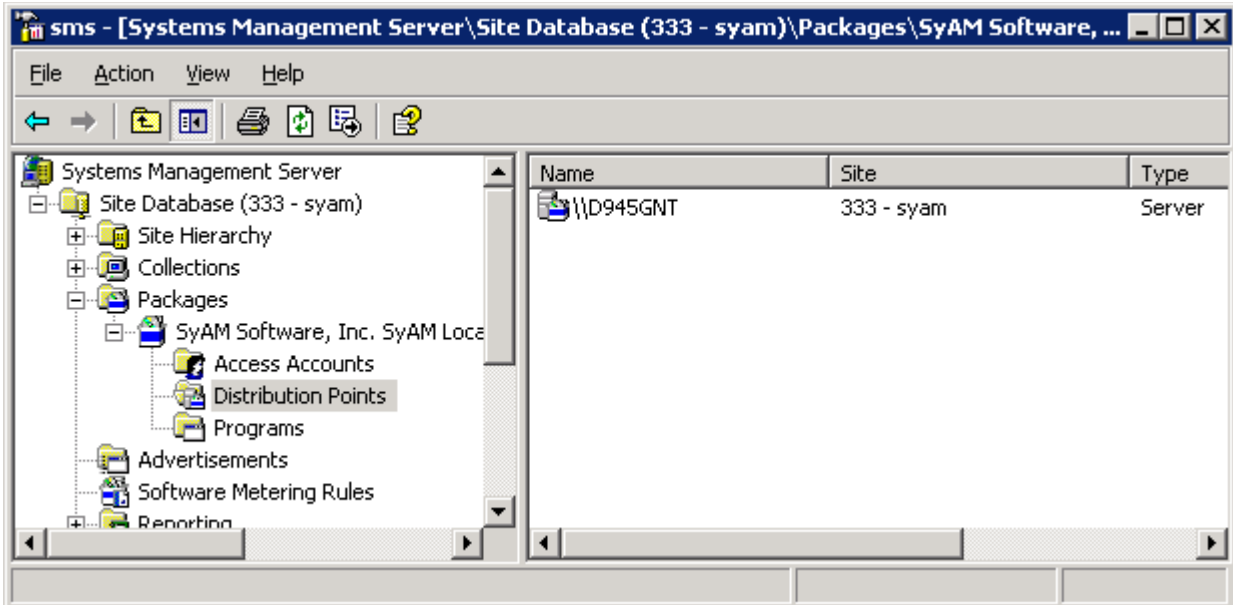


- At this time, configure any “Access Accounts” and “Distribution Points” for the package. This configuration will vary based on your configuration, but here are some samples: (at the very least, you must have a configured administrative account)

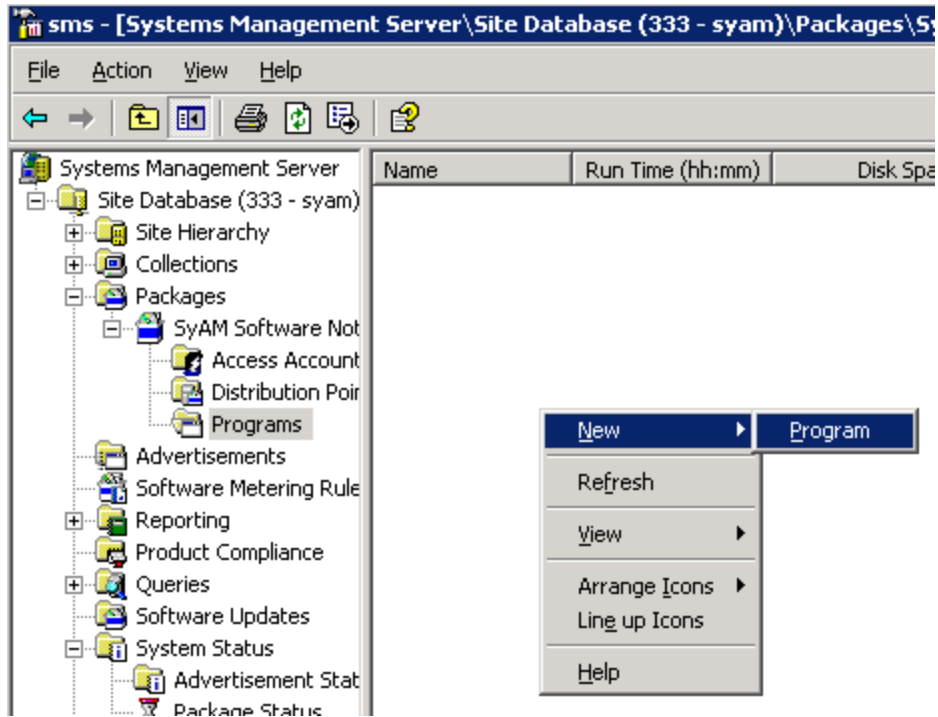
Access Accounts



Distribution Points



- Expand “Packages” on the left, expand the package just created, and then click “Programs”. On the right, right-click and select New -> Program:



- Configure the General tab as shown below. The command line should be equal to the name of the executable file (plus any of the following additional parameters to identify the installation configuration)

INSTALLDIR = the directory where the agent will be installed

SERVERMONITOR = the specific product to install, at this time valid options are

“SMA” (Server/Desktop/Notebook agent)

“SML” (Server/Desktop/Notebook local)

“SMC” (Server/Desktop central)

PREFERLANG = the language for the user interface

IPMICHECK = This is required for hardware sensor discovery and must be set to “SMBUS”

UISAVESETTINGS = required for silent installation, this must be “YES”

REMOTECONSOLE = determines if remote console tools are to be installed, this must be “YES”

SSLENABLE = determines if you enable SSL 128bit encryption between the browser and the Local Interface, can be “Yes” or “No”

Current languages supported:

Language	Abbreviation	Number
English (US)	en	/11033
English (UK)	en_GB	/12057
French (European)	fr	/11036
French (Canadian)	fr_CA	/13084
German	de	/11031
Portuguese (European)	pt	/12070
Portuguese (South American)	pt_BR	/11046
Spanish (European)	es	/11034
Spanish (South America)	es_MX	/12058

Here is an example of the command line to install the server software as an agent only with no user interface to the local system:

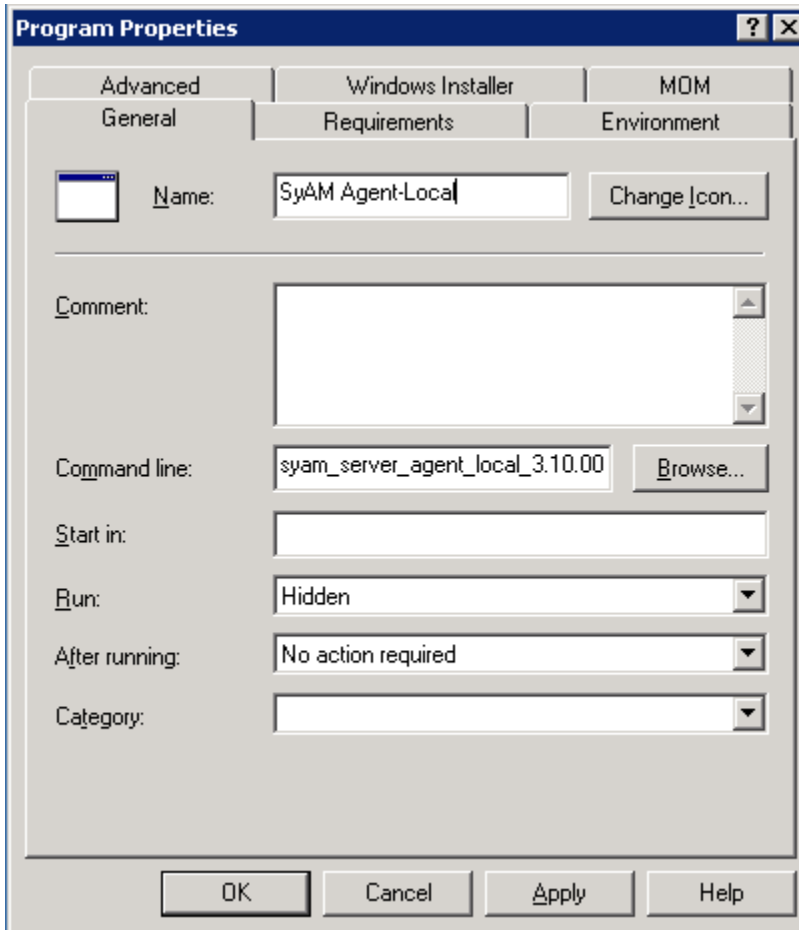
```
syam_server_monitor.exe /s /v"/qn INSTALLDIR="C:\syam" SERVERMONITOR="SMA"
PREFERLANG="en" IPMICHECK="SMBUS" UISAVESETTINGS="Yes" IPMIADDON="No"
REMOTECONSOLE="Yes" SLENABLE="No" /11033
```

Here is an example of the command line to install the desktop software with the agent and US English local interface.

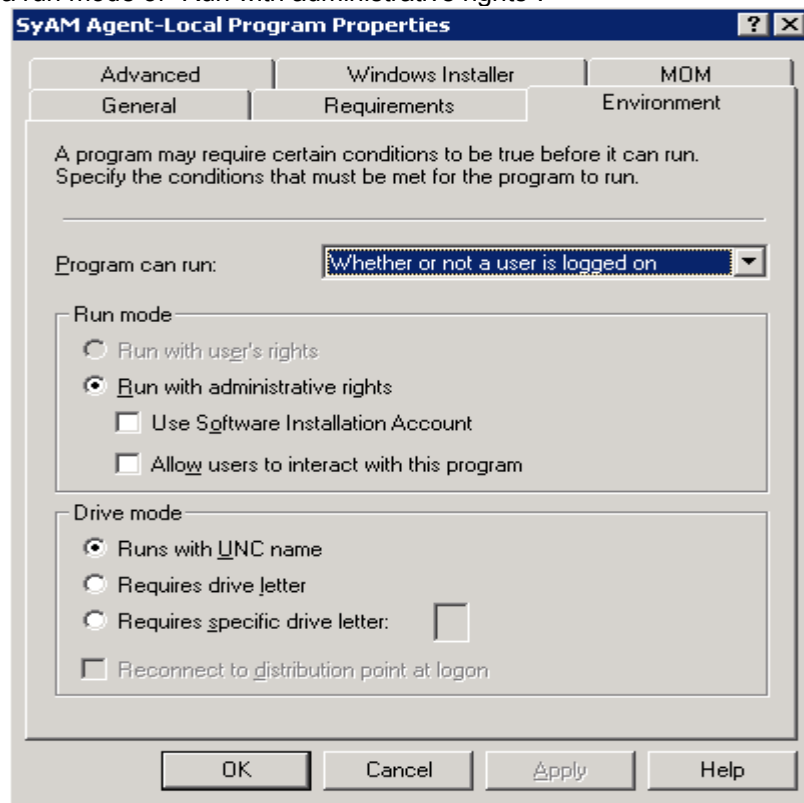
```
syam_desktop_monitor.exe /s /v"/qn INSTALLDIR="C:\syam" SERVERMONITOR="SML"
PREFERLANG="en" IPMICHECK="SMBUS" UISAVESETTINGS="Yes" IPMIADDON="No"
REMOTECONSOLE="Yes" SLENABLE="Yes" /11033
```

Here is an example of the command line to install the notebook software with the agent and German local interface.

```
syam_desktop_monitor.exe /s /v"/qn INSTALLDIR="C:\syam" SERVERMONITOR="SML"
PREFERLANG="de" IPMICHECK="SMBUS" UISAVESETTINGS="Yes" IPMIADDON="No"
REMOTECONSOLE="Yes" SLENABLE="Yes" /11031
```



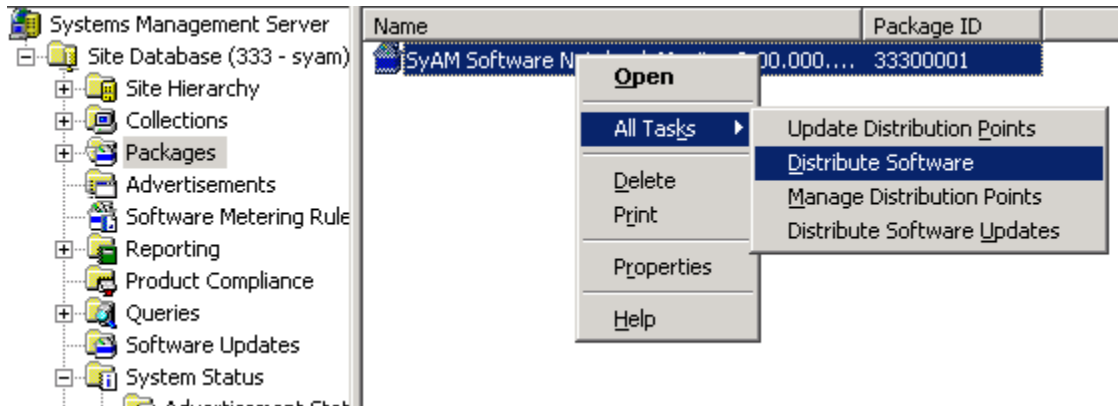
11. Under the “Environment” tab, change the “Program can run” option to “Whether or not a user is logged on” and select a run mode of “Run with administrative rights”:



12. Click the Advanced tab. Check the box “Suppress program notifications”. This is required for a completely silent installation, without SMS’s advertised program notifications appearing.

13. Click OK to create the program definition.

14. Right-click the new package, and choose All Tasks -> Distribute Software:



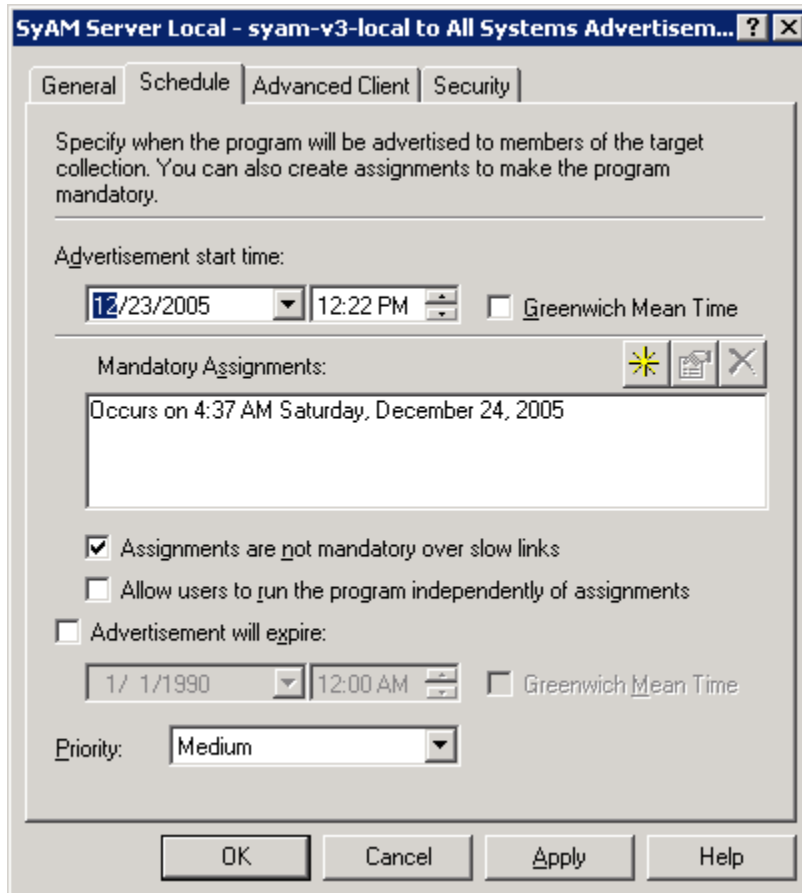
15. On the first page of the Distribute Package Wizard, click next.

16. Choose which distribution points should provide the executable, and click next.

17. Configure advertising options suitable to your environment. Click next.

18. Choose the program you just created. Click next. Click finish.

19. Configure advertising options. This will specifically depend on how your environment is setup. Note that in order to run the program automatically (without waiting for an administrator to run it from the “Run Scheduled Programs” link in control panel, you must create a mandatory assignment for the advertisement. To do this, right-click the advertisement, choose properties, then select the schedule tab. Add a mandatory assignment, and click ok:



10. The executable is now advertised to the collections you specified. For further details about advertised programs, see your SMS documentation.

11. To verify installation status, select "System Status" -> "Advertisement Status" -> <advertisement name>. To view individual system installation messages, right click on the status entry displayed and select "Show Messages" -> "All":

A general overview:

Site	Received	Failures	Programs Started	Program Errors	Program Success	Program Errors ...	Program Succes...
333 - syam	0	0	3	0	3	0	0

The screenshot also shows a tree view on the left with the following items:

- ems Management Server
- Site Database (333 - syam)
- Site Hierarchy
- Collections
- Packages
- SyAM Software, Inc. SyAM Local Agent
 - Access Accounts
 - Distribution Points
 - Programs
- Advertisements
- Software Metering Rules
- Reporting
- Product Compliance
- Queries
- Software Updates
- System Status
 - Advertisement Status
- SyAM Local Agent - SyAM Agent

Specific machines:

Severity	Type	Site code	Date / Time	System	Component
Information	Milestone	333	12/13/2005 10:51:27...	DELL-GX110-1	Software Distributio
Information	Milestone	333	12/13/2005 10:51:19...	DELL-GX110-1	Software Distributio
Information	Milestone	333	12/13/2005 10:49:31...	D945GNT	Software Distributio
Information	Milestone	333	12/13/2005 10:49:25...	D945GNT	Software Distributio
Information	Milestone	333	12/13/2005 10:46:54...	NICK-8N9E6EDU29	Software Distributio
Information	Milestone	333	12/13/2005 10:46:08...	NICK-8N9E6EDU29	Software Distributio
Information	Milestone	333	12/13/2005 10:41:10...	DELL-GX110-1	Software Distributio
Information	Audit	333	12/13/2005 10:41:08...	D945GNT	SMS Administrator C
Information	Milestone	333	12/13/2005 10:41:01...	DELL-GX110-1	Software Distributio
Information	Milestone	333	12/13/2005 10:39:31...	D945GNT	Software Distributio
Information	Milestone	333	12/13/2005 10:39:24...	D945GNT	Software Distributio

Individual installation:

Status Message Details

Date: 12/13/2005 Type: Milestone
 Time: 10:51:27.457 PM Severity: Information
 Site code: 333 Message ID: 10008
 System: DELL-GX110-1 Process ID: 932
 Source: SMS Client Thread ID: 1128
 Component: Software Distribution

Description:

The program for advertisement "33320004" completed successfully ("33300002" - "SyAM Agent-Local").
 User context: NT AUTHORITY\SYSTEM

Properties:

Advertisement ID : 33320004
 Client SMS Unique ID :
 GUID:D5ADDE09-DC43-4657-A8CE-193E073595B2

Previous Next OK Help

Contact SyAM Software

For additional information, sales, or technical support, contact SyAM Software:

SyAM Software, Inc.

Corporate Headquarters
1 Chestnut Street, Suite 3-I
Nashua, NH 03060
PH +1 603 598-9575
FX +1 603 598-9577
info@syamssoftware.com

888 UnifyMe (864-3963)

Sales Offices
US Sales 203 407-9180
South America +55 11 3641-3580
Mexico +52 55 8596-5078
Europe +49 8158 905933
www.syamssoftware.com