

# SyAM Software™

## SyAM Software Tool Tip: Using Novell ZENworks for Deploying SyAM Software

### Overview:

This document provides an overview of how to deploy SyAM Software throughout your organization using Novell ZENworks.

### Requirements:

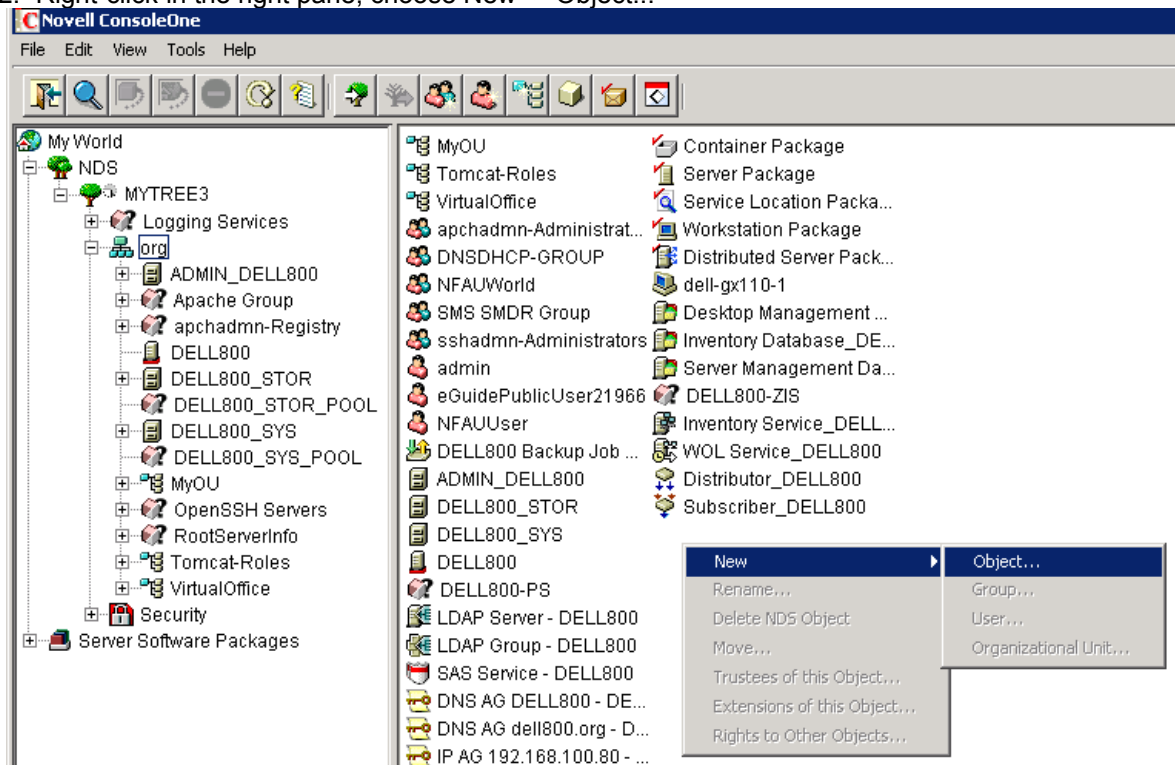
- Novell ZENworks 7 Desktop Management server component installed on the NDS tree
- Novell ZENworks 7 Desktop Management agent installed on each workstation ready for deployment
- A system logged in to the NDS tree with administrative rights and the ZENworks ConsoleOne schema extensions installed
- All workstations properly imported into the NDS tree
- SyAM's executable install file copied to a location all workstations have access too (in this document, we use workstation associated installations as opposed to user associated installations, so all workstations must have access to the directory where the file exists)

### Benefits:

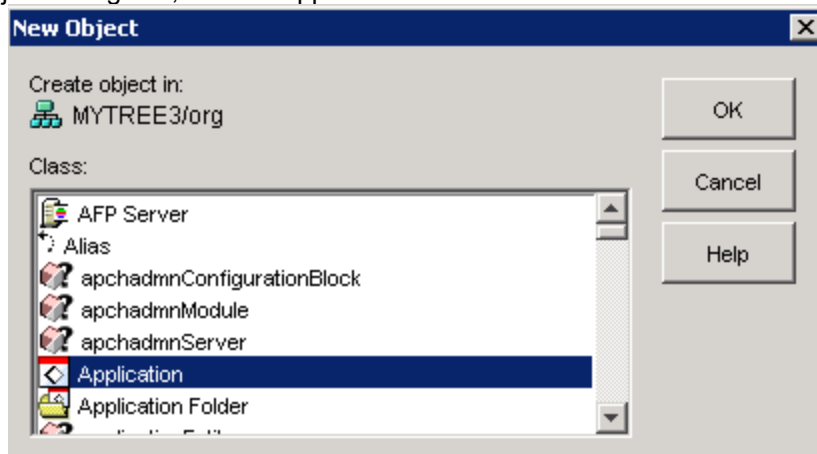
Provides an easy mechanism to deploy SyAM's product throughout the enterprise which is already running Novell ZENworks 7.

### Step by Step Guide:

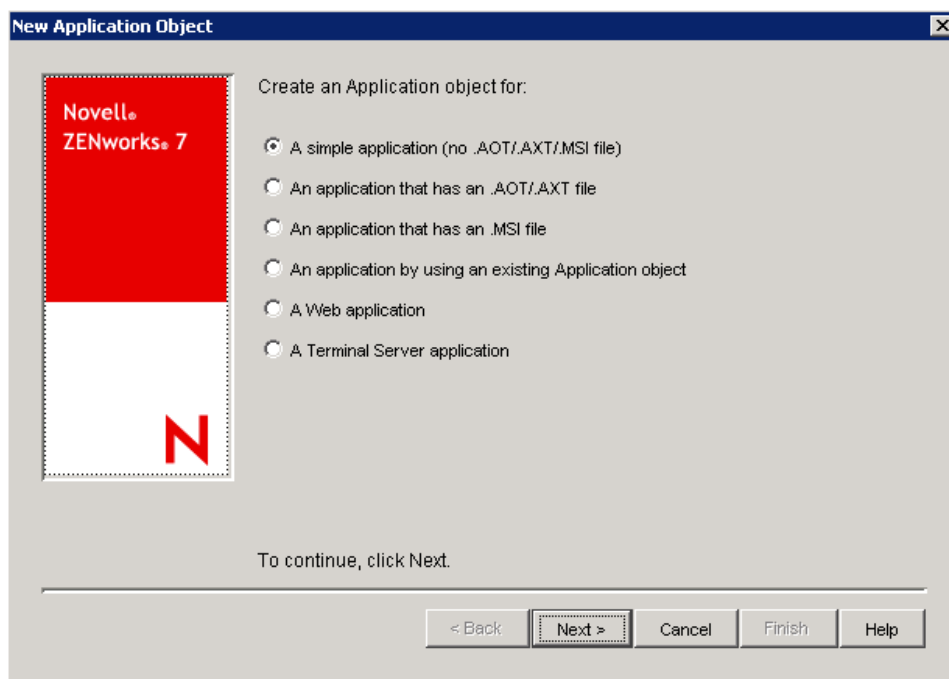
1. Start ConsoleOne, and open the Organizational Unit where the workstations were imported.
2. Right-click in the right pane, choose New -> Object...



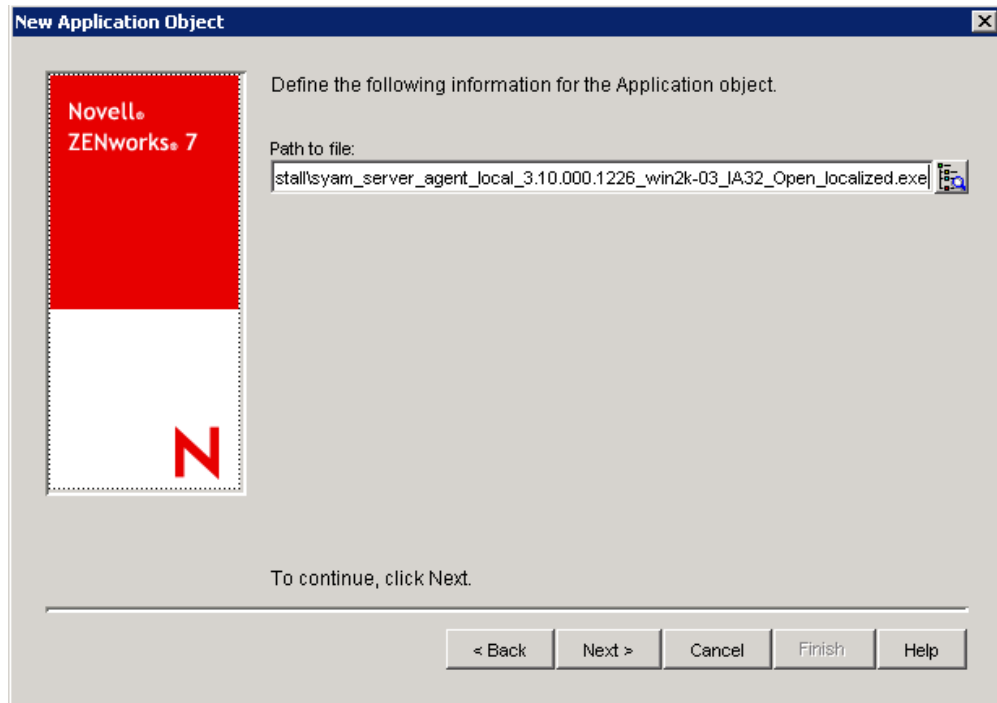
3. In the New Object dialog box, choose Application then click Ok:



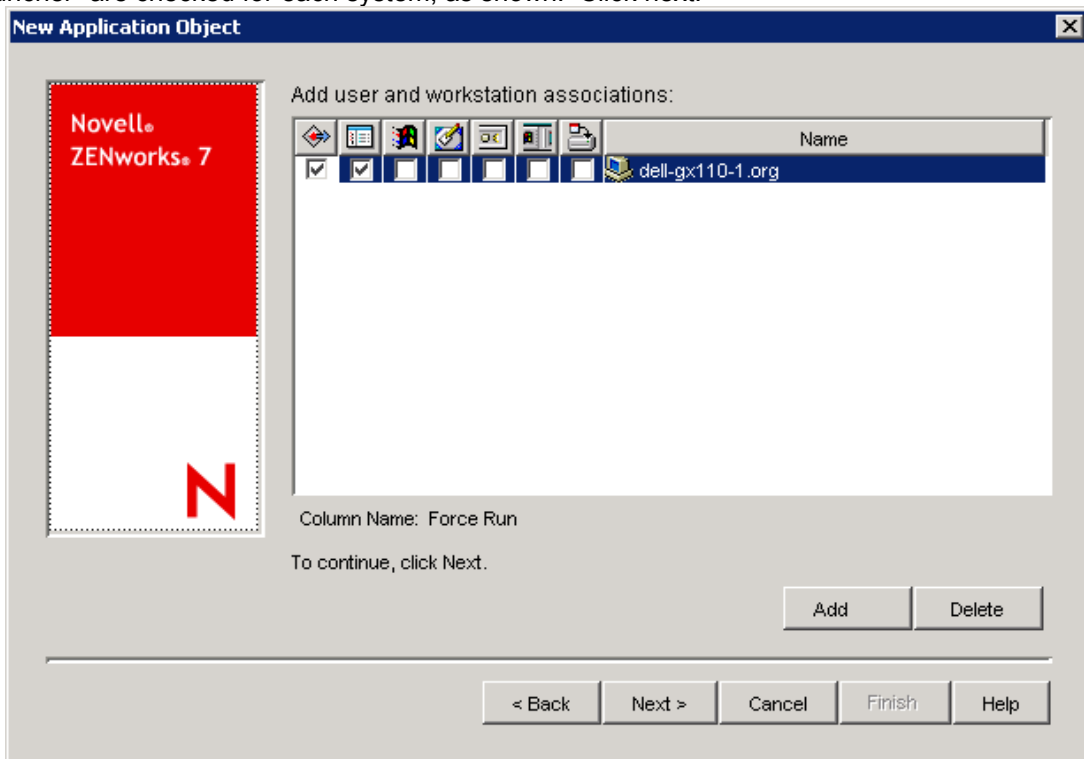
4. Make sure "A simple application (no .AOT/.AXT/..MSI file)" is selected and click Next:



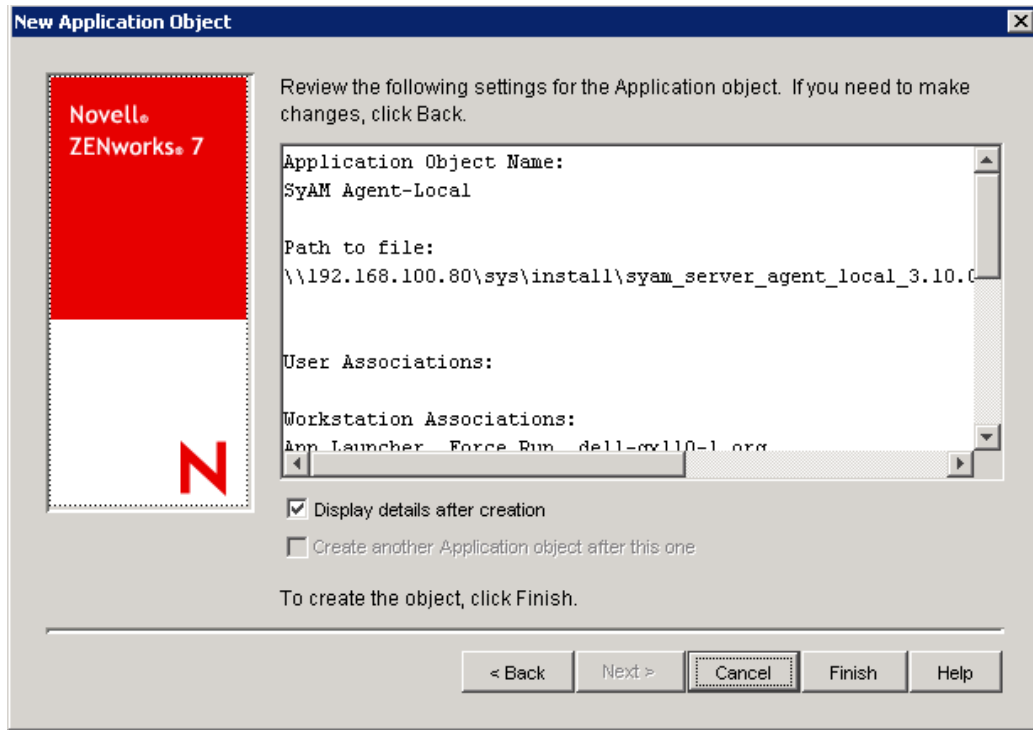
5. Enter an appropriate object name, and click Next (in this example, the name is SyAM-Agent Local)
6. Enter the file path where SyAM's executable exists. Make sure that all workstations have sufficient access to this directory. In this example, the path is [\\192.168.100.80\sys\install\syam\\_server\\_agent\\_local\\_3.10.000.1226\\_win2k-03\\_IA32\\_Open\\_localized.exe](http://192.168.100.80/sys/install/syam_server_agent_local_3.10.000.1226_win2k-03_IA32_Open_localized.exe). Click next.



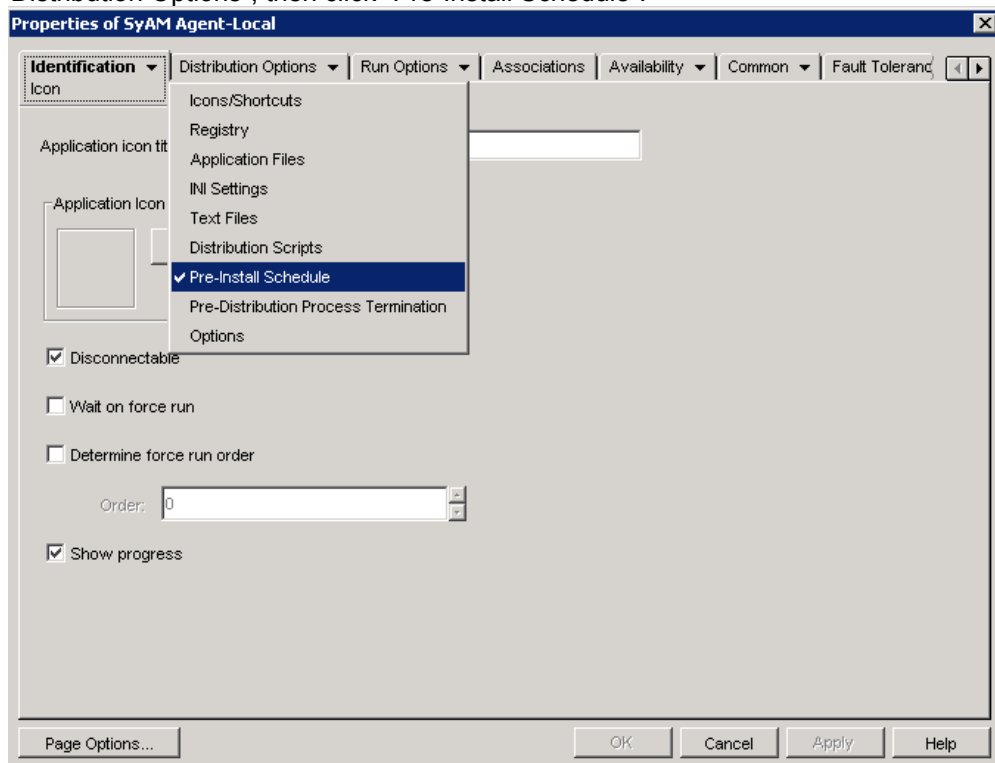
7. Do not enter any availability rules. Click next.
8. Add all workstations where you wish to deploy the software. Make sure that “Force Run” and “App Launcher” are checked for each system, as shown. Click next.



9. Check “Display details after creation”. Click next.



10. Select "Distribution Options", then click "Pre-Install Schedule".



11. Click "Pre-Install application" and specify a schedule to install the application.

12. Select "Distribution Options" again, then click "Options". Check "Distribute Always".

13. Select "Run Options", then "Application". Enter one of the following under "Parameters", and check the box "Run application once":

The command line should be equal to the name of the executable file (plus any of the following additional parameters to identify the installation configuration)

**INSTALLDIR** = the directory where the agent will be installed

**SERVERMONITOR** = the specific product to install, at this time valid options are

"SMA" (Server/Desktop/Notebook agent)

"SML" (Server/Desktop/Notebook local)

"SMC" (Server/Desktop central)

**PREFERLANG** = the language for the user interface

**IPMICHECK** = This is required for hardware sensor discovery and must be set to "SMBUS"

**UISAVESETTINGS** = required for silent installation, this must be "YES"

**REMOTECONSOLE** = determines if remote console tools are to be installed, this must be "YES"

**SSEnable** = determines if you enable SSL 128bit encryption between the browser and the Local Interface, can be "Yes" or "No"

Current languages supported:

Language	Abbreviation	Number
English (US)	en	/11033
English (UK)	en_GB	/12057
French (European)	fr	/11036
French (Canadian)	fr_CA	/13084
German	de	/11031
Portuguese (European)	pt	/12070
Portuguese (South American)	pt_BR	/11046
Spanish (European)	es	/11034
Spanish (South America)	es_MX	/12058

Here is an example of the command line to install the server software as an agent only with no user interface to the local system:

```
syam_server_monitor.exe /s /v"/qn INSTALLDIR="C:\syam" SERVERMONITOR="SMA"
PREFERLANG="en" IPMICHECK="SMBUS" UISAVESETTINGS="Yes" IPMIADDON="No"
REMOTECONSOLE="Yes" SSEnable="No" /11033
```

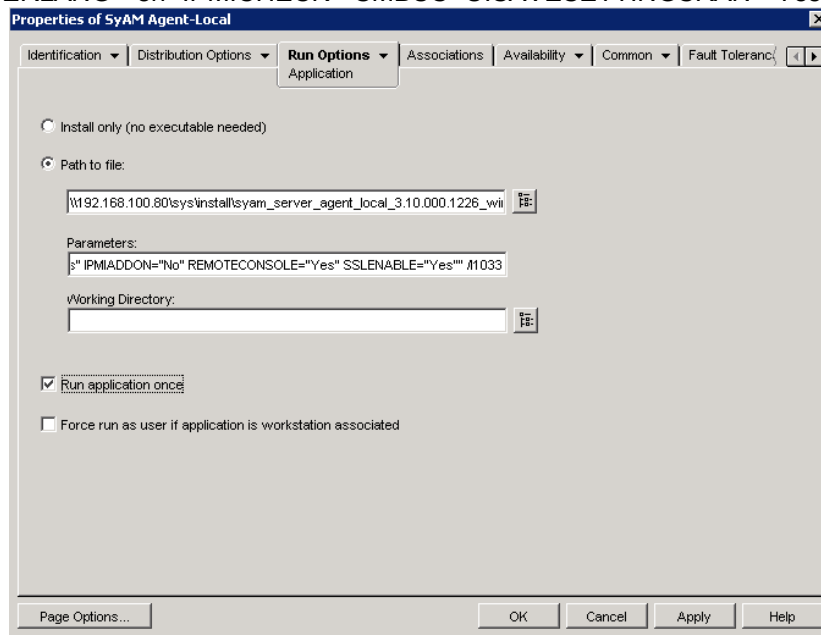
Here is an example of the command line to install the desktop software with the agent and US English local interface.

```
syam_desktop_monitor.exe /s /v"/qn INSTALLDIR="C:\syam" SERVERMONITOR="SML"  
PREFERLANG="en" IPMICHECK="SMBUS" UISAVESETTINGS SRAN="Yes" IPMIADDON="No"  
REMOTECONSOLE="Yes" SLENABLE="Yes"" /11033
```

Here is an example of the command line to install the notebook software with the agent and German local interface.

```
syam_desktop_monitor.exe /s /v"/qn INSTALLDIR="C:\syam" SERVERMONITOR="SML"  
PREFERLANG="de" IPMICHECK="SMBUS" UISAVESETTINGS SRAN="Yes" IPMIADDON="No"  
REMOTECONSOLE="Yes" SLENABLE="Yes"" /11031
```

- To install SML, use /s /v"/qn INSTALLDIR="C:\syam" SERVERMONITOR="SML" PREFERLANG="en" IPMICHECK="SMBUS" UISAVESETTINGS SRAN="Yes" IPMIADDON="No" REMOTECONSOLE="Yes" SLENABLE="Yes"" /11033
- To install SMA, use /s /v"/qn INSTALLDIR="C:\syam" SERVERMONITOR="SMA" PREFERLANG="en" IPMICHECK="SMBUS" UISAVESETTINGS SRAN="Yes"



14. Click ok. The software should be automatically installed on each associated workstation using the configured schedule.



## Contact SyAM Software

For additional information, sales, or technical support, contact SyAM Software:

### **SyAM Software, Inc.**

**Corporate Headquarters**  
1 Chestnut Street, Suite 3-I  
Nashua, NH 03060  
PH +1 603 598-9575  
FX +1 603 598-9577  
[info@syamssoftware.com](mailto:info@syamssoftware.com)

### **888 UnifyMe (864-3963)**

**Sales Offices**  
US Sales 203 407-9180  
South America +55 11 3641-3580  
Mexico +52 55 8596-5078  
Europe +49 8158 905933  
[www.syamssoftware.com](http://www.syamssoftware.com)